

Epidemiological Week N<sup>o</sup> 30 (22 - 28 July 2006)

6 Aug 06/ Vol. 36/ DEWS 2006-30

## Contents

Reporting Units .....	2
Total number of consultations .....	2
DEWS Data, Epidemiological Week N <sup>o</sup> 30 2006.....	3
DEWS Data, Monthly Summary (Epidemiological Weeks N <sup>o</sup> 27-30) .....	4
Acute Watery Diarrhoea .....	5
Bloody Diarrhoea .....	6
Acute Jaundice Syndrome.....	7
Malaria .....	7
Measles .....	8
Acute Respiratory Infection .....	8
Other Reportable Diseases and Conditions .....	9
Outbreak Alert and Response .....	10
Number of reported cases and deaths, AJK .....	12
Number of reported cases and deaths, NWFP .....	13



Heavy rainy season is another challenge in EQ Areas

## Highlights

- In the past month (Epidemiological weeks 27-30 inclusive), 377,790 health events under surveillance were reported including 87 deaths.
- This week, 257 reporting units reported a total of 96,857 consultations, including 16 deaths.
- This week AWD is most common reason for consultation in the under five group.
- 31 cases of suspected measles were reported; an increase from the 9 cases in W29.
- 61 cases of Acute Jaundice Syndrome were reported; the rate of reported cases of jaundice doubled in Mansehra.
- 961 cases of Bloody diarrhoea were reported; Muzaffarabad showed the highest percentage with 41% of all consultations for bloody diarrhoea.

The Weekly Morbidity and Mortality Report (WMMR) is published by the Ministry of Health of Pakistan (MOH) and the World Health Organization (WHO). The WMMR is built on surveillance data that health service providers and NGOs transmit on a weekly basis from health facilities and hospitals in those areas affected by the earthquake that struck Pakistan on 8 October 2005.

The WMMR objectives are to monitor the trend of health conditions over a period of time and provide vital information to all health partners. The WMMR is only a snapshot of the health conditions in those facilities where events are registered and data collected and does not necessarily reflect the situation from other health facilities.

The WMMR is a publication that has been developed for emergencies and previously used in other areas such as the Darfur Crisis.

The WMMR is published by the World Health Organization (WHO),  
Health Emergency Operation Centre, House #6, Street #20, F-7/2, Islamabad, Pakistan  
For More Information, please contact:

Dorcas Taylor, Epidemiologist, WHO/EHA/Pakistan; [taylor@egpak.emro.who.int](mailto:taylor@egpak.emro.who.int) or  
Dr. Birjees Mazher Kazi, Chief, Public Health Laboratories Division, NIH MOH; [kazis@isb.paknet.com.pk](mailto:kazis@isb.paknet.com.pk) or  
WHO Webpage: <http://www.whopak.org/disaster>

### Reporting Units

The total numbers of reporting sites for the Disease Early Warning System (DEWS) in the earthquake affected areas increased by 3 units this week to a total of 257. Two new sites were included from Battagram and one site in Bagh was closed. See Table 1 for summary statistics.

Table 1. Reported health facilities by district, Earthquake Affected Areas, Pakistan, 1 - 28 July 2006.

Area	Population	Reporting Health Facilities			
		1 - 7 July Week 27	8 - 14 July Week 28	15 - 21 July Week 29	22 - 28 July Week 30
Muzaffarabad	894,364	65	86	76	74
Bagh	452,532	31	30	32	31
Poonch	633,712	50	50	41	49
Mansehra / Balakot	1,154,804	70	69	69	64
Battagram / Shangla	592,256	26	34	36	39
<b>Total</b>	<b>3,738,168</b>	<b>242 (93%)</b>	<b>269 (98%)</b>	<b>254 (92%)</b>	<b>257 (93%)</b>

### Total number of consultations

The number of consultations dropped in week thirty to 96,857, from 99,848 in week 29, a 3% reduction. Heavy seasonal rains and blocked roads in many of the districts may have prevented potential patients from attending health facilities. The decline in consultations occurred in all districts. Facilities had a wide range in the number of consultations that they performed, in keeping with the variability in sizes of facilities. The average number of consultations per facility was 376, with a maximum of 6678 and a minimum of 19.

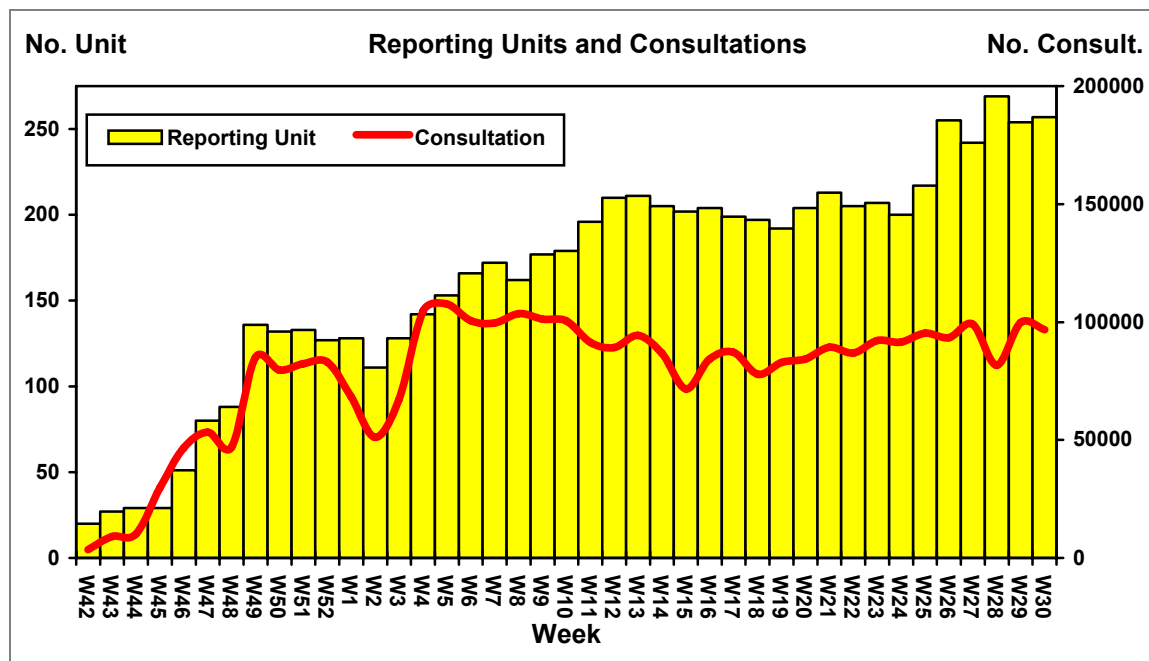


Figure 1. Weekly trend of reporting units and total number of consultations, Earthquake Affected Areas, Pakistan, 15 October 2005 – 28 July 2006.

**DEWS Data, Epidemiological Week N<sup>o</sup> 30 2006**

Between 22 - 28 July 2006, **96,857** consultations for health events under surveillance were reported through DEWS. Overall, **17%** (16,887) were due to Acute Respiratory Infections (**ARI**), **14%** (13,102) due to Acute Diarrhoea (**AWD**), **6%** (5,874) due to Fever of Unknown Origin (**FUO**), and **6%** (5,436) due to Injuries (**INJ**). **ARI** attributed to **23%** and **15%** of consultations in the less than 5 years old and 5 or more years old respectively. All other reportable conditions, with the exception of bloody diarrhoea (1.25% of all consultations), each represented less than 1% of the total consultations in week 30.

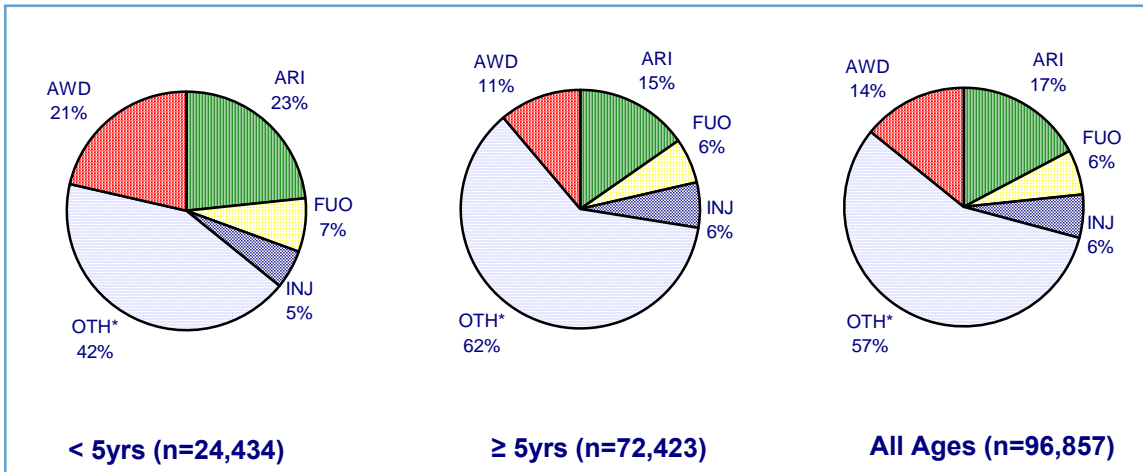


Figure 2. Proportion of primary causes for all reported cases, Earthquake Affected Areas, Pakistan, 22-28 July 2006.

\*OTH includes all other reportable conditions, plus all other consultations for conditions not under surveillance

**DEWS Data, Epidemiological Week N<sup>o</sup> 30, 2006: Consultations by age**

Though ARI is still the single greatest reason for consultation in both age groups, for children < 5 acute watery diarrhoea (AWD) has nearly equalled the ARI rate. The two conditions together account for almost half the consultations in children under 5. Seasonal rains have led to greater contamination of water sources, particularly in mountainous areas where many people rely on open springs for water, and there is no protection of the source from contamination. Children under five have been particularly effected: in some sites, AWD is the reason for all consultations in the under five age group. **In approximately 10% of sites (25/257), over 50% of the consultations in the under five age group were for AWD.** In contrast, for the five and over age group, the maximum percentage of consultations for AWD in a site was 53%, and the median level was 10%. See Figure 3.

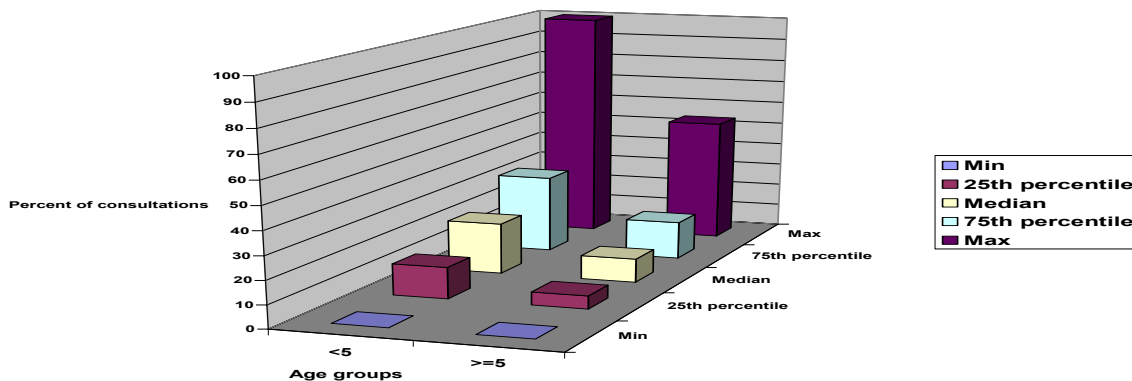


Figure 3: Distribution of AWD cases as a percentage of all consultations by age group, per reporting site

**DEWS Data, Monthly Summary (Epidemiological Weeks N<sup>o</sup> 27-30)**

In summary for the past month between 1 to 28 July (Epidemiological weeks 27-30 inclusive), 165,935 consultations for health conditions under surveillance were reported, out of a total 377,790 consultations. **17%** (65,217) of consultations were due to acute respiratory infection (**ARI**), **13%** (50,812) acute watery diarrhoea (**AWD**), **6%** (22,224) Unexplained Fever (**FUO**) and **5%** (20,541) Injuries (**INJ**).

Table 2. Comparison of the weekly distribution of reported cases, deaths and monthly Case Fatality Rate (CFR), Earthquake Affected Areas, Pakistan, 1 – 28 July 2006.

Week Event	WEEK 27		WEEK 28		WEEK 29		WEEK 30		TOTAL		CFR%
	C	D	C	D	C	D	C	D	C	D	
<b>AWD</b>	12351	1	11709	0	13621	6	13102	0	50812	7	<b>0.014</b>
<b>BD</b>	915	0	1160	0	1004	0	961	0	4040	0	<b>0.000</b>
<b>AFP</b>	0	0	0	0	4	0	0	0	4	0	<b>0.000</b>
<b>MAL</b>	690	0	473	0	802	0	648	0	2618	0	<b>0.000</b>
<b>ARI</b>	16373	4	14141	2	17774	2	16887	0	65217	8	<b>0.012</b>
<b>MES</b>	18	0	33	0	9	0	31	0	91	0	<b>0.000</b>
<b>MEN</b>	13	0	17	1	8	0	1	0	39	2	<b>0.000</b>
<b>JAU</b>	95	0	86	0	107	0	61	0	349	0	<b>0.000</b>
<b>TET</b>	0	0	0	0	0	0	0	0	0	0	<b>0.000</b>
<b>AHF</b>	0	0	0	0	0	0	0	0	0	0	<b>0.000</b>
<b>FUO</b>	5585	0	4643	0	6092	0	5874	1	22224	1	<b>0.004</b>
<b>INJ</b>	5934	0	4294	0	4870	0	5436	0	20541	0	<b>0.000</b>
<b>OTH</b>	57107	9	45063	21	55557	24	53856	15	211855	69	<b>0.033</b>
<b>TOTAL</b>	<b>99081</b>	<b>14</b>	<b>81619</b>	<b>24</b>	<b>99848</b>	<b>32</b>	<b>96857</b>	<b>16</b>	<b>377790</b>	<b>87</b>	
<b>RU</b>	<b>242</b>		<b>269</b>		<b>254</b>		<b>257</b>				

C – Cases, D – Deaths, AWD - Acute Diarrhoea, BD - Bloody Diarrhoea, AFP - Acute Flaccid Paralysis, MAL – Malaria, ARI - Acute Respiratory Infection, MES – Measles, Men - Meningitis, JAU - Acute Jaundice Syndrome, TET - Neonatal Tetanus, AHF Acute Hemorrhagic Fever, FUO –Unexplained fever, INJ – Injuries, OTH – Others, RU – Reporting Units. Please note data from late reporting in previous weeks has been updated.

During the same reporting period, **91,972** consultations were reported in the **less than 5 years** old group, (**24%** of the total consultations), of which **24%** (22,393) were due to **ARI**, **20%** (18,752) due to **AWD**, **7%** (6,418) due to **FUO** and **5%** (4,141) were reported as injuries (**INJ**).

Table 3. Total number of reported cases, deaths and monthly Case Fatality Rate (CFR), less than 5 years old, Earthquake Affected Areas, Pakistan 1 – 28 July 2006.

Week Event	WEEK 27		WEEK 28		WEEK 29		WEEK 30		TOTAL		CFR%
	C	D	C	D	C	D	C	D	C	D	
<b>AWD</b>	4196	1	4096	0	5318	1	5129	0	18752	2	<b>0.011</b>
<b>BD</b>	201	0	233	0	371	0	281	0	1086	0	<b>0.000</b>
<b>AFP</b>	0	0	0	0	0	0	0	0	0	0	<b>0.000</b>
<b>MAL</b>	170	0	115	0	179	0	176	0	641	0	<b>0.000</b>
<b>ARI</b>	5696	4	4989	2	6019	2	5672	0	22393	8	<b>0.036</b>
<b>MES</b>	6	0	23	0	7	0	10	0	46	0	<b>0.000</b>
<b>MEN</b>	2	0	1	1	0	0	0	0	3	1	<b>0.000</b>
<b>JAU</b>	20	0	22	0	30	0	9	0	81	0	<b>0.000</b>
<b>TET</b>	0	0	0	0	0	0	0	0	0	0	<b>0.000</b>
<b>AHF</b>	0	0	0	0	0	0	0	0	0	0	<b>0.000</b>
<b>FUO</b>	1436	0	1414	0	1753	0	1807	0	6418	0	<b>0.000</b>
<b>INJ</b>	1236	0	822	0	968	0	1115	0	4141	0	<b>0.000</b>
<b>OTH</b>	9407	3	8468	7	10249	8	10235	4	38411	22	<b>0.057</b>
<b>TOTAL</b>	<b>22370</b>	<b>8</b>	<b>20183</b>	<b>10</b>	<b>24894</b>	<b>11</b>	<b>24434</b>	<b>4</b>	<b>91972</b>	<b>33</b>	
<b>RU</b>	<b>242</b>		<b>269</b>		<b>254</b>		<b>257</b>				

In the current week, There was a decrease in the number of cases of AWD, with **13,102** this week and **13,621** last week with no related deaths reported. In the current week, **ARI** also showed a decrease in the total number of cases as compared with the previous week (**17,774** last week and **16,887** this week). There were **no** deaths reported from **ARI**. The weekly proportion of ARI and AWD is shown in figure 6.

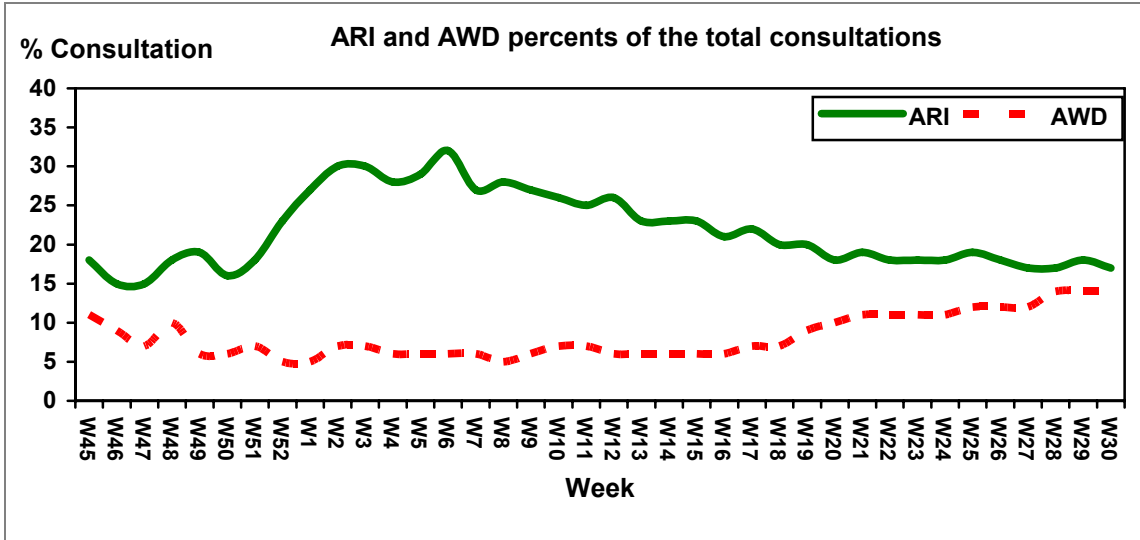


Figure 6. Weekly trend of percent consultations of reported ARI and AWD cases, Earthquake Affected Areas, Pakistan, 5 November -28 July 2006.

**Acute Watery Diarrhoea**

During the epidemiological week 30, a total of 13,102 **AWD** cases were reported with no related deaths. Battagram district reported the highest average percentage of consultations for AWD across reporting sites at **16%**. Figure 4 shows AWD as a percent of all consultations by district. Though several districts have shown a slight decrease (Muzaffarabad, Mansehra), the apparent decreases in overall percentages of consultations mask a number of outbreaks throughout the region (see alerts and outbreaks).

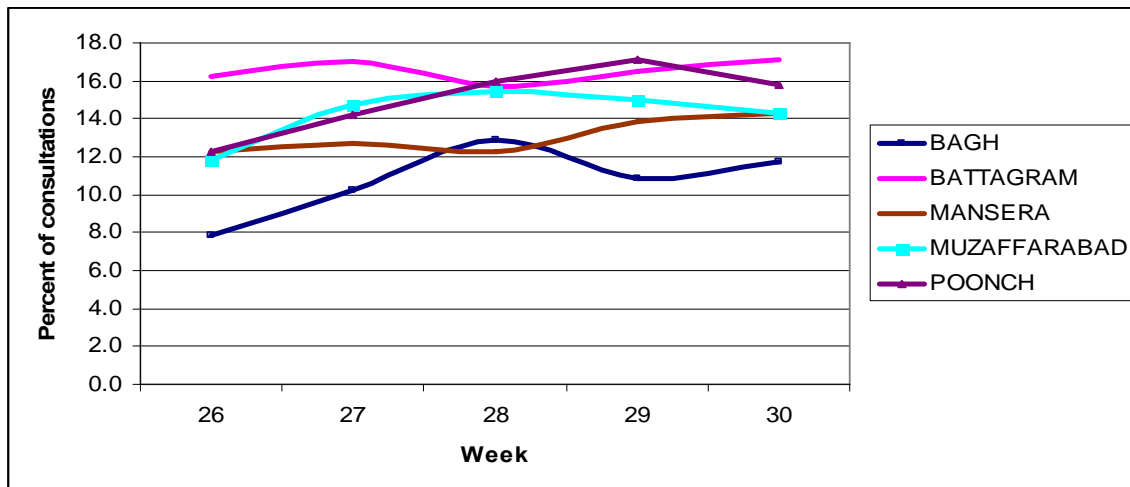


Figure 4: AWD as an average percent of all consultations across reporting sites, by district 24 June – July 28

All districts have reported outbreaks, except Bagh the assessment of situation was difficult due to landslide and heavy rain. The age and district breakdown of AWD as an average percent of all consultations across reporting sites is given in Figure 5

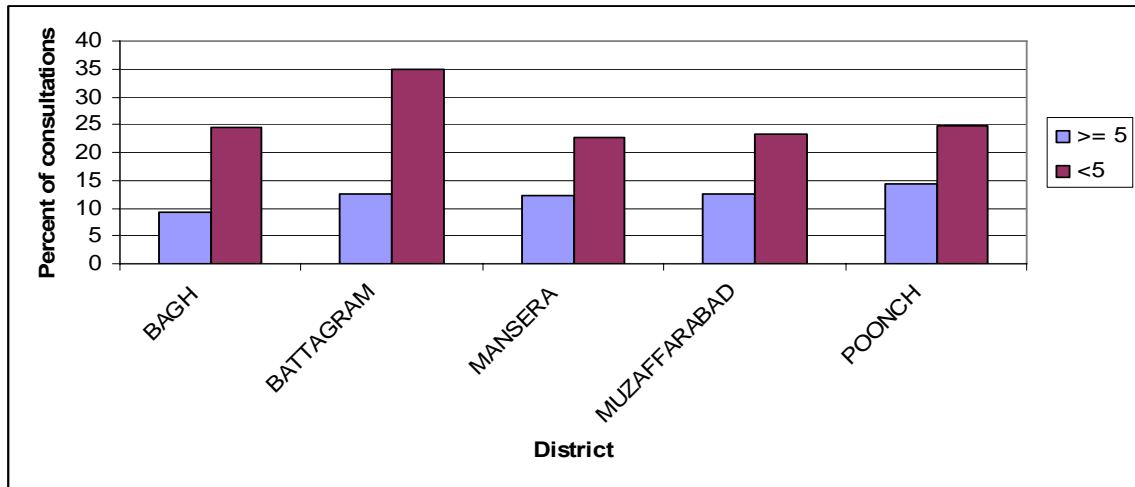


Figure 5. Distribution of Acute Watery Diarrhoea as a proportion of all consultations, by age and district, Earthquake Affected Areas, 22-28 July 2006.

**Bloody Diarrhoea**

The average percentage of all consultations across reporting sites that were for bloody diarrhoea began to increase in week 21. The distribution of cases however varies considerably by district. Poonch district has experienced a continuous low rate, though it is beginning to increase in week 30. The rates in Muzaffarabad and Mansehra have been very similar until week 29, when the percentage for Mansehra dropped considerably, while the rate in Muzaffarabad increased in week 29, and decreased slightly in week 30. The weekly trend of bloody diarrhoea cases by district is shown in figure 6.

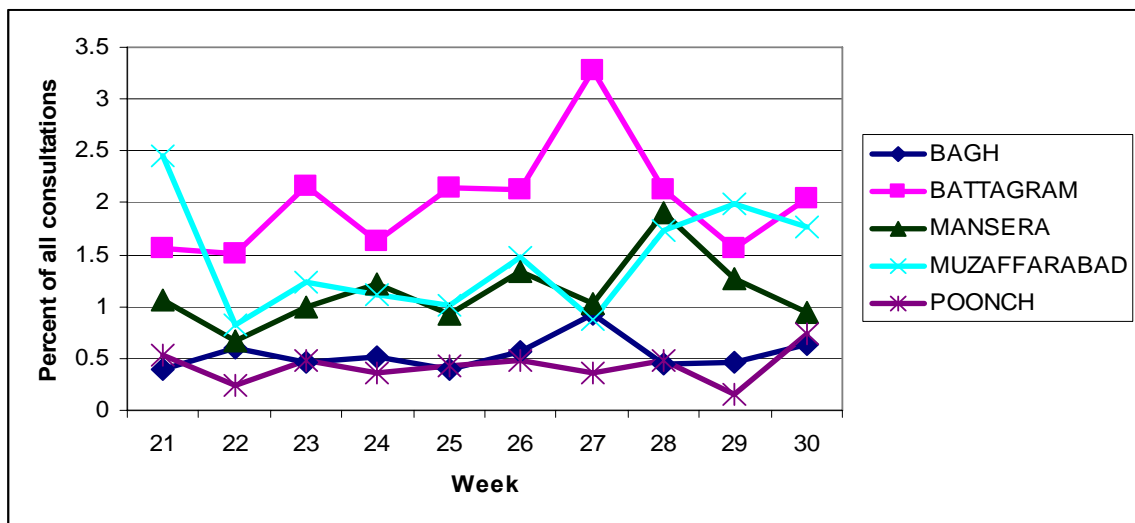


Figure 6. Weekly trend of reported bloody diarrhoea cases, Earthquake Affected Areas, Pakistan, 20 May - July 28 2006

**Acute Jaundice Syndrome**

In the current week, **61** cases of acute jaundice syndrome with **no** related deaths were reported. This represents a 43% drop in cases over week 29. Though the absolute number of cases of jaundice has increased over time, when corrected for the addition of reporting sites, it can be seen that the rate fluctuated early in the emergency, but has largely stabilized since early 2006. The trend in acute jaundice cases per reporting site is shown in Figure 7.

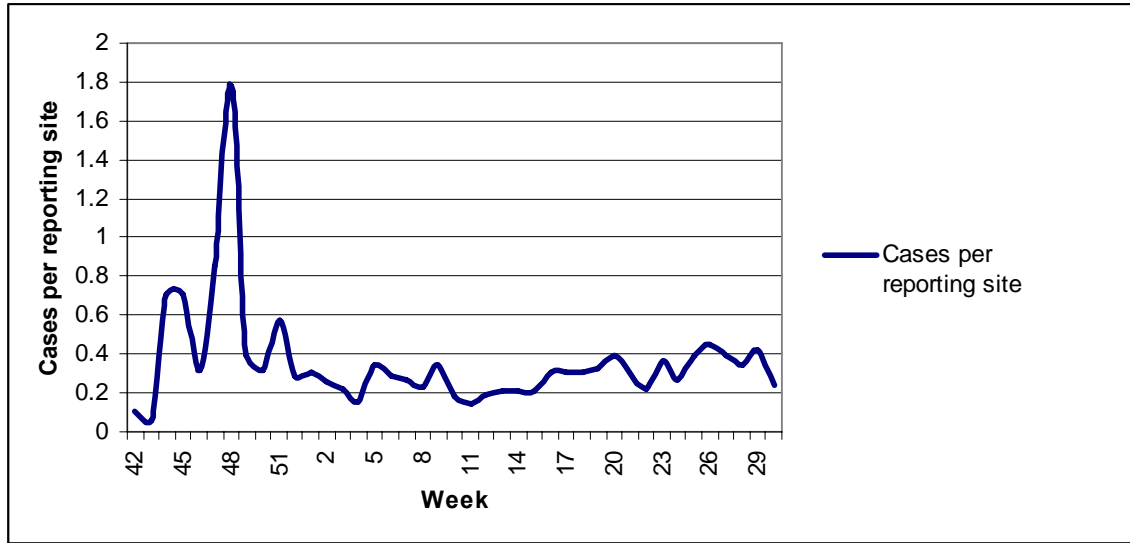


Figure 7 .Weekly trend of Acute Jaundice Syndrome, Earthquake Affected Areas, Pakistan, Nov 5 - July 28, 2006.

**Malaria**

Since the beginning of data collection, **9,342** cases of clinically diagnosed malaria were reported from the earthquake-affected areas. In the current week, **648** cases with **no** related death were reported. The highest rate was reported in Muzaffarabad (3.4 cases per reporting site), a decrease since last week, where the high was 4.5 in Mansehra. Since week 20 there has been a gradual increase in cases. With the rains, more mosquito breeding sites will be created so the number of cases can be expected to rise.

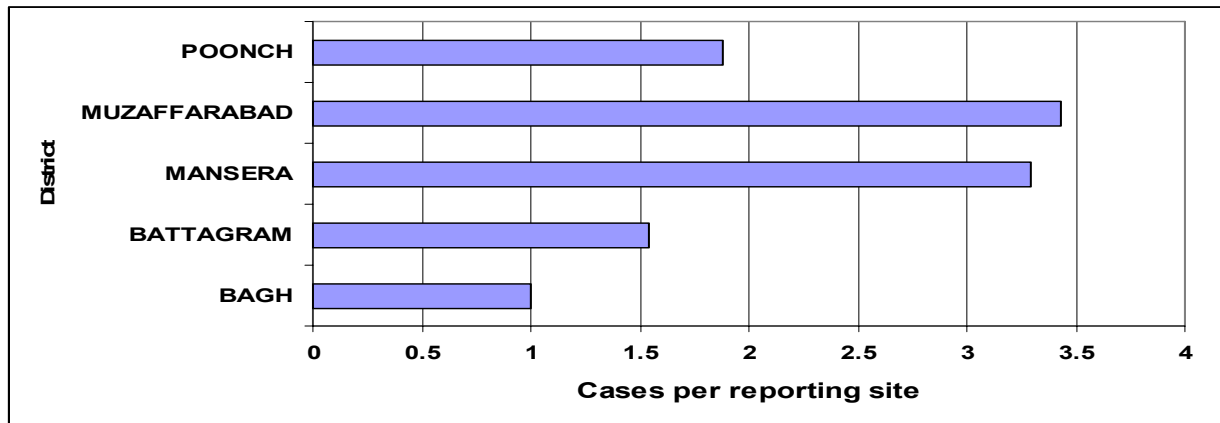


Figure 8: Malaria cases per reporting site, Earthquake Affected Areas, Pakistan, 22 - 28 July 2006.

**Measles**

After a significant drop to 9 cases in week 29, the number of cases of measles has once again risen to **31** suspected cases in the earthquake-affected areas. Approximately two-thirds of the cases (21/31) were in patients five years and older. Muzaffarabad accounted for 22 of the cases. There were no cases reported from Poonch district. The weekly trend of measles cases per reporting site is shown in figure 9.

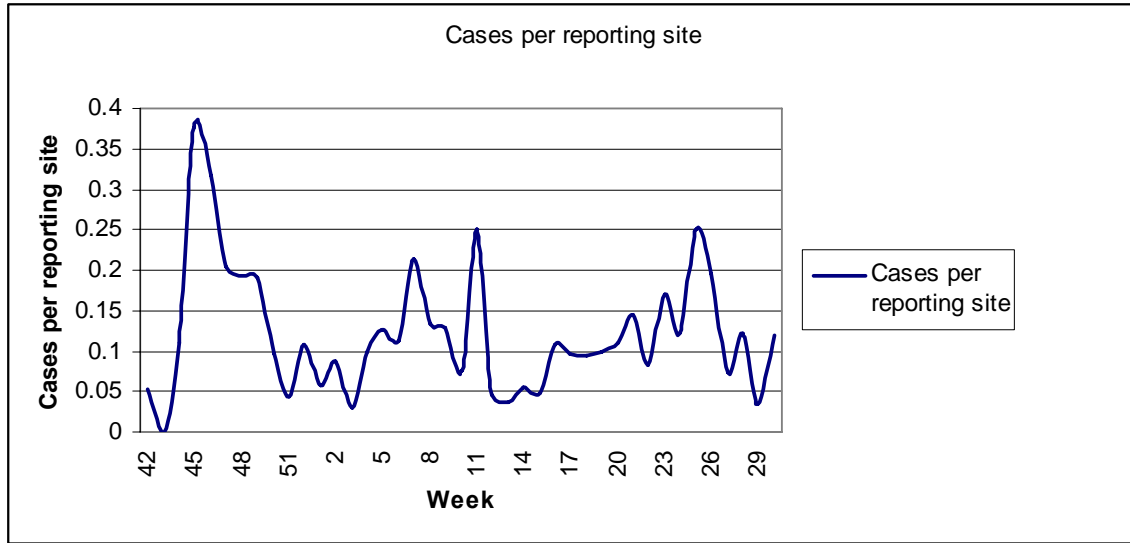


Figure 9. Weekly trend of reported measles cases, Earthquake Affected Areas, Pakistan, 5 November 2005 - 28 July 2006.

**Acute Respiratory Infection**

Acute Respiratory Tract Infections (ARI) have been gradually reducing as a reason for consultation since reaching a peak early in the new year. Overall, these conditions now represent less than 20% of all consultations. See Figure 10 for the trend in ARI as an average of the percent of all consultations across reporting sites.

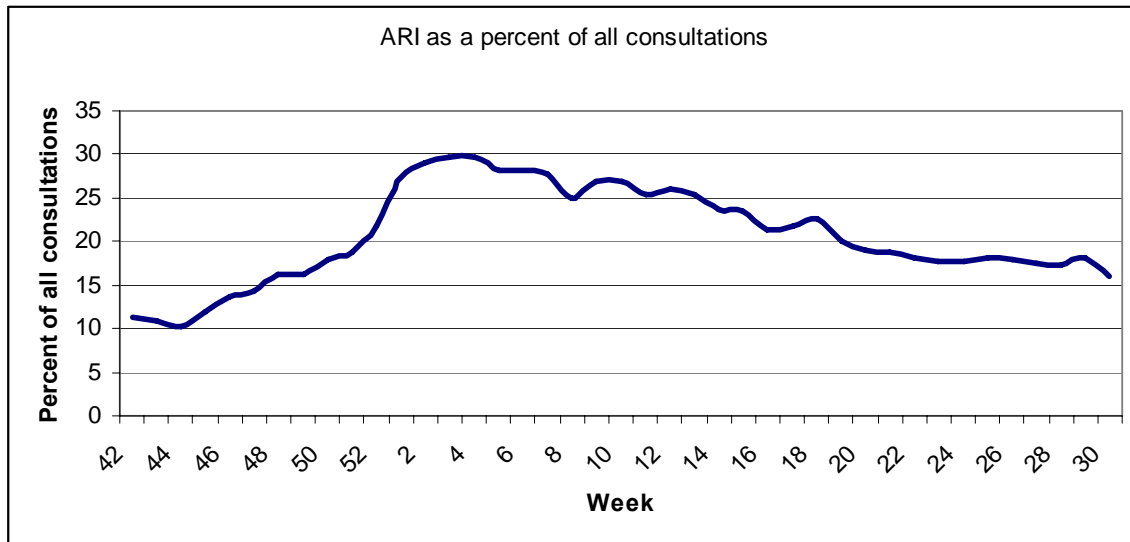


Figure 10: Weekly trend in ARI as an average percent of all consultations across reporting sites, Earthquake Affected Areas, Pakistan, 5 November 2005 – 28 July 2006

**Other Reportable Diseases and Conditions**

There was one case of suspected meningitis reported in week 30, from Muzaffarabad. There were no cases of tetanus, hemorrhagic fever, or acute flaccid paralysis in reporting week 30. Unexplained fever has decreased as an average percent of all consultations across reporting sites in all reporting districts, however the rate of unexplained fever varies considerably by district. This may be an artifact of diagnosis choice more than true differences however.

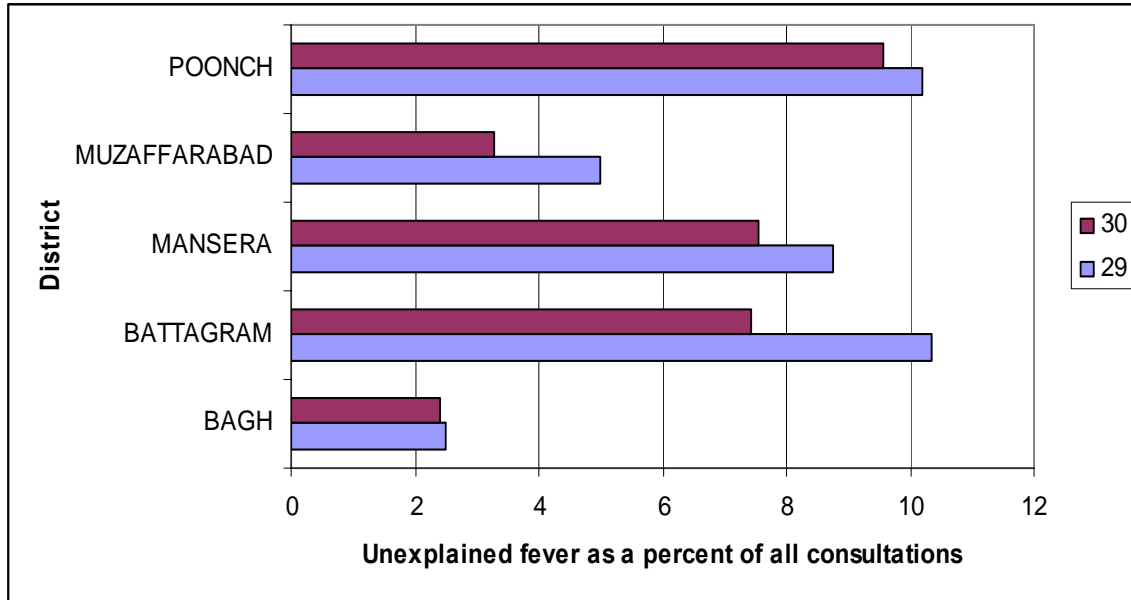


Figure 11: Unexplained fever as an average percentage of all consultations across reporting sites, by district, Earthquake Affected Areas, Pakistan, 14 - 21 July and 22 - 28 July 2006 .

With warmer weather comes more outdoor activity, including rebuilding. With more activity comes more injuries. The average percent of consultations across reporting sites for injuries has gradually increased with warmer weather in most districts. See Figure 12.

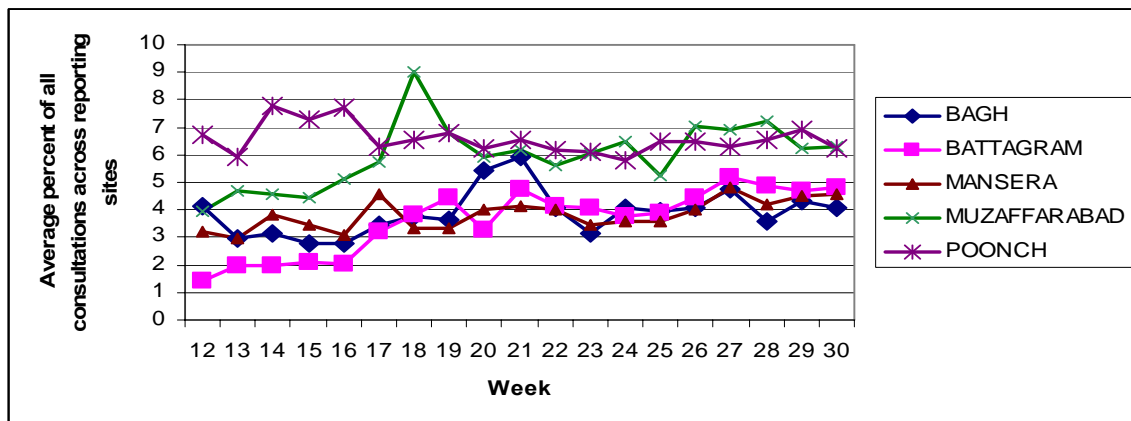


Figure 12: Injuries as an average percentage of all consultations across reporting sites, by district, Earthquake Affected Areas, Pakistan, 18 March - 28 July 2006 .

## Outbreak Alert and Response<sup>1</sup>

### Acute Watery Diarrhoea

#### **Bagh**

An increase in diarrhoea cases was investigated in Birpani village. No dehydration was found.

#### **Muzaffarabad**

Several sites (AIMS, CMH, PIMA, and JUD) reported an increase in the number of cases of AWD. The situation is being investigated.

#### **Battagram**

An outbreak involving a death from acute watery diarrhoea was investigated by WHO and Ibn-e- Sina Pakistan in UC Shumlai. Water in the area is contaminated, and Ibn Sina has started a health education programme in the area.

#### **Rawalakot**

CMH reported 854 cases of acute watery diarrhoea this week. A further 7 sites reported large increases in the number of patients with this condition. The cases are being investigated.

#### **Mansehra**

An alert was received of a large number of cases of acute watery diarrhoea from Bassian Army field hospital. An investigation was undertaken at the site and a stool sample sent for analysis. Another alert was received from the Balakot area, however after investigation it was found that the cases did not involve dehydration.

### Acute Jaundice Syndrome

#### **Muzaffarabad**

16 cases were reported from Muzaffarabad, 14 of these were in PIMA hospital.

#### **Rawalakot**

.One case of suspected acute viral hepatitis was received from BHU Hussainkot. The case is under investigation.

### Bloody Diarrhoea

#### **Rawalakot**

21 cases of bloody diarrhoea were reported from BHU Datoot this week. The cases are under investigation.

### Meningitis

#### **Muzaffarabad**

One case of suspected meningitis was reported in a patient over five years old. The case is being investigated.

---

<sup>1</sup> Outbreak Investigation and response of Suspected Viral Hepatitis, Malaria, and Bloody Diarrhoea and Watery Diarrhoea would only take place when a cluster of cases is identified or there is an increase in the incidence of the disease.  
(Note: Single death due to Diarrhoea and single case of reported severe dehydration among >5 years would be investigated)

## Measles

### ***Muzaffarabad***

21 cases of measles were reported from Muzaffarabad, mainly from JUD (18 cases). All cases are being investigated.

### ***Battagram***

5 cases of measles were reported, 4 from district Kohistan which is inaccessible due to rains. District authorities have been informed.

**Number of reported cases and deaths per District, AJK**Table 6. Number of reported cases and deaths, **Bagh District**, Earthquake Affected Areas, Pakistan, 1 – 28 July 2006.

Week	AWD		BD		AFP		MAL		ARI		MEA		MEN		JAU		TET		AHF		UXF		INJ		OTH	
	C	D	C	D	C	D	C	D	C	D	C	D	C	D	C	D	C	D	C	D	C	D	C	D	C	D
27	1503	1	107	0	0	0	34	0	2606	0	1	0	0	0	10	0	0	0	0	0	293	0	859	0	10861	1
28	962	0	38	0	0	0	15	0	1065	0	0	0	0	0	6	0	0	0	0	0	244	0	262	0	5280	0
29	1356	4	75	0	0	0	21	0	1948	0	0	0	0	0	12	0	0	0	0	0	341	0	608	0	10375	0
30	1437	0	69	0	0	0	31	0	2272	0	2	0	0	0	7	0	0	0	0	0	434	0	770	0	9532	0
<b>Total</b>	<b>5258</b>	<b>5</b>	<b>289</b>	<b>0</b>	<b>0</b>	<b>0</b>	<b>101</b>	<b>0</b>	<b>7891</b>	<b>0</b>	<b>3</b>	<b>0</b>	<b>0</b>	<b>0</b>	<b>35</b>	<b>0</b>	<b>0</b>	<b>0</b>	<b>0</b>	<b>0</b>	<b>1312</b>	<b>0</b>	<b>2499</b>	<b>0</b>	<b>36048</b>	<b>1</b>

Table 7. Number of reported cases and deaths, **Poonch District**, Earthquake Affected Areas, Pakistan, 1 – 28 July 2006.

Week	AWD		BD		AFP		MAL		ARI		MEA		MEN		JAU		TET		AHF		UXF		INJ		OTH	
	C	D	C	D	C	D	C	D	C	D	C	D	C	D	C	D	C	D	C	D	C	D	C	D	C	D
27	1607	0	32	0	0	0	271	0	2594	0	0	0	0	0	5	0	0	0	0	0	1317	0	680	0	7714	3
28	1052	0	20	0	0	0	58	0	1826	0	0	0	0	0	3	0	0	0	0	0	1140	0	612	0	4166	4
29	2125	1	14	0	1	0	89	0	2566	0	0	0	0	0	1	0	0	0	0	0	1918	0	838	0	6153	0
30	2107	0	86	0	0	0	92	0	2707	0	0	0	0	0	1	0	0	0	0	0	1899	0	1288	0	7388	5
<b>Total</b>	<b>6891</b>	<b>1</b>	<b>152</b>	<b>0</b>	<b>1</b>	<b>0</b>	<b>510</b>	<b>0</b>	<b>9693</b>	<b>0</b>	<b>0</b>	<b>0</b>	<b>0</b>	<b>0</b>	<b>10</b>	<b>0</b>	<b>0</b>	<b>0</b>	<b>0</b>	<b>0</b>	<b>6274</b>	<b>0</b>	<b>3418</b>	<b>0</b>	<b>25421</b>	<b>12</b>

Table 8. Number of reported cases and deaths, **Muzaffarabad District**, Earthquake Affected Areas, Pakistan, 1 – 28 July 2006.

Week	AWD		BD		AFP		MAL		ARI		MEA		MEN		JAU		TET		AHF		UXF		INJ		OTH	
	C	D	C	D	C	D	C	D	C	D	C	D	C	D	C	D	C	D	C	D	C	D	C	D	C	D
27	4683	0	443	0	0	0	276	0	5259	4	11	0	13	0	38	0	0	0	0	0	2090	0	2934	0	16081	3
28	5391	0	725	0	0	0	286	0	5447	0	21	0	16	1	36	0	0	0	0	0	1229	0	2265	0	14194	12
29	4404	0	454	0	0	0	312	0	6017	1	5	0	8	0	23	0	0	0	0	0	1505	0	2093	0	15809	9
30	4344	0	396	0	0	0	254	0	5619	0	22	0	1	0	18	0	0	0	0	0	1466	1	2225	0	14354	6
<b>Total</b>	<b>18822</b>	<b>0</b>	<b>2018</b>	<b>0</b>	<b>0</b>	<b>0</b>	<b>1128</b>	<b>0</b>	<b>22342</b>	<b>5</b>	<b>59</b>	<b>0</b>	<b>38</b>	<b>1</b>	<b>115</b>	<b>0</b>	<b>0</b>	<b>0</b>	<b>0</b>	<b>0</b>	<b>6290</b>	<b>1</b>	<b>9517</b>	<b>0</b>	<b>60438</b>	<b>30</b>

**Number of reported cases and deaths per District, NWFP**Table 9. Number of reported cases and deaths, **Battagram District**, Earthquake Affected Areas, Pakistan, 1 – 28 July 2006.

Week	AWD		BD		AFP		MAL		ARI		MEA		MEN		JAU		TET		AHF		UXF		INJ		OTH	
	C	D	C	D	C	D	C	D	C	D	C	D	C	D	C	D	C	D	C	D	C	D	C	D	C	D
27	1101	0	99	0	0	0	8	0	1097	0	0	0	0	0	4	0	0	0	0	0	107	0	258	0	3358	0
28	1266	0	96	0	0	0	35	0	1108	0	4	0	0	0	8	0	0	0	0	0	420	0	256	0	3422	0
29	1906	0	95	0	0	0	72	0	1769	0	1	0	0	0	19	0	0	0	0	0	563	0	294	0	4809	1
30	1470	0	112	0	0	0	60	0	1502	0	5	0	0	0	17	0	0	0	0	0	433	0	319	0	5186	1
<b>Total</b>	<b>5743</b>	<b>0</b>	<b>402</b>	<b>0</b>	<b>0</b>	<b>0</b>	<b>175</b>	<b>0</b>	<b>5476</b>	<b>0</b>	<b>10</b>	<b>0</b>	<b>0</b>	<b>0</b>	<b>48</b>	<b>0</b>	<b>0</b>	<b>0</b>	<b>0</b>	<b>0</b>	<b>1523</b>	<b>0</b>	<b>1127</b>	<b>0</b>	<b>16775</b>	<b>2</b>

Table 10. Number of reported cases and deaths, **Mansehra District\***, Earthquake Affected Areas, Pakistan, 1 – 28 July 2006.

Week	AWD		BD		AFP		MAL		ARI		MEA		MEN		JAU		TET		AHF		UXF		INJ		OTH	
	C	D	C	D	C	D	C	D	C	D	C	D	C	D	C	D	C	D	C	D	C	D	C	D	C	D
27	3457	0	234	0	0	0	101	0	4817	0	6	0	0	0	38	0	0	0	0	0	1778	0	1203	0	19093	2
28	3038	0	281	0	0	0	79	0	4695	2	8	0	1	0	33	0	0	0	0	0	1610	0	899	0	18001	5
29	3859	1	366	0	3	0	313	0	5516	1	3	0	0	0	52	0	0	0	0	0	1795	0	1044	0	18683	6
30	3744	0	298	0	0	0	211	0	4787	0	2	0	0	0	18	0	0	0	0	0	1642	0	834	0	17396	3
<b>Total</b>	<b>14098</b>	<b>1</b>	<b>1179</b>	<b>0</b>	<b>3</b>	<b>0</b>	<b>704</b>	<b>0</b>	<b>19815</b>	<b>3</b>	<b>19</b>	<b>0</b>	<b>1</b>	<b>0</b>	<b>141</b>	<b>0</b>	<b>0</b>	<b>0</b>	<b>0</b>	<b>0</b>	<b>6825</b>	<b>0</b>	<b>3980</b>	<b>0</b>	<b>73173</b>	<b>16</b>

\*Data from Balakot Tehsil were merged with the data from Mansehra district.