



**Morbidity and Mortality Report
Flood affected district of**



07 March 2008

This report is built on DEWS surveillance data that MoH, health service providers and NGOs transmit on a weekly basis from health facilities and hospitals in flood affected areas of Pakistan.

Sindh



In This issue:

Detailed epidemiological description of epidemiological week: 33/07 to -6/08 (11 August 2007 to 8 February, 2008)

Highlights

- Between August 2007 to January 2008 (Epidemiological week 33/07 to 4/08), 404,105 consultations relating to health conditions under surveillance were reported, out of total 685,813 consultation.
- There were 7% (49,267) of acute diarrhoea consultations reported
- Bloody diarrhoea made up 2% (11,170) and
- Malaria made up 10% (71,830) of total consultations



**World Health Organization
(WHO) Pakistan**
Emergency Preparedness &
Humanitarian Action (EHA)
Islamabad – Pakistan

Further Information:
Dr. Rayana Bouhaka
Manager Operations
WHO-EHA
Islamabad-Pakistan
Bouhakar@pak.emro.who.int

Consultation by gender

From week 33 of 2007 to week 6 of 2008, there were 49,267 cases of acute diarrhoea reported from flood affected districts. Initially reporting units from 10 districts sent their surveillance data. There are significant communications challenges in the flood affected areas, and WHO surveillance staff is working to increase the number of sites able to report weekly. See figure 1 for summary statistics.

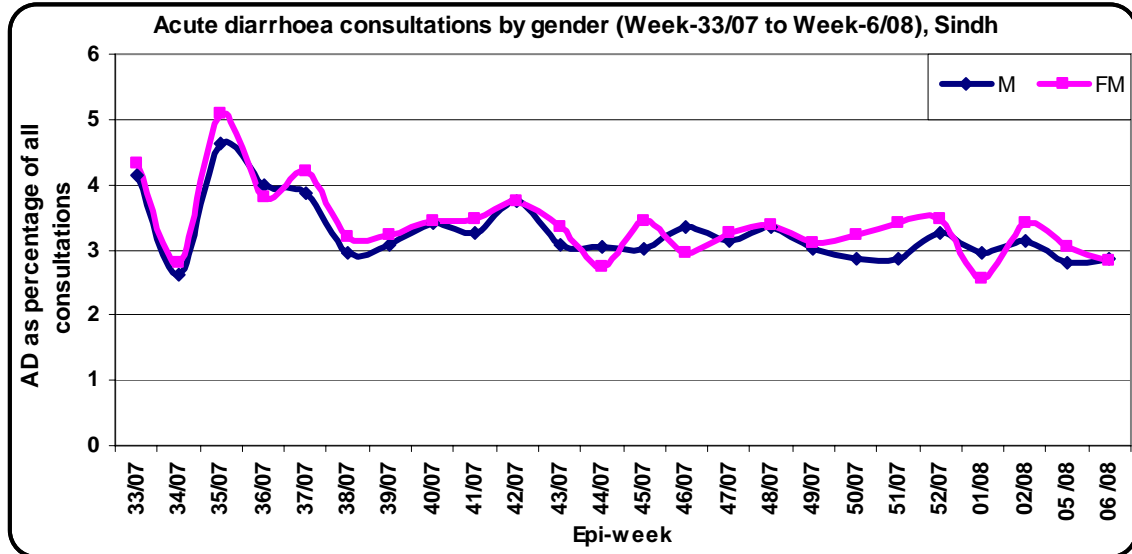


Figure 1: acute diarrhoea as percentage of all consultations by gender, Flood affected districts, Sindh, 11 Aug2007 to 8 February 2008

Consultations by age

When consultations are divided by age group, children less than 5 years of age group make up 21% of all consultations and 27% represent the five to fourteen years of age group. Adults of reproductive age make up 33% of consultations while 19% made up by older adults. See figure 2.

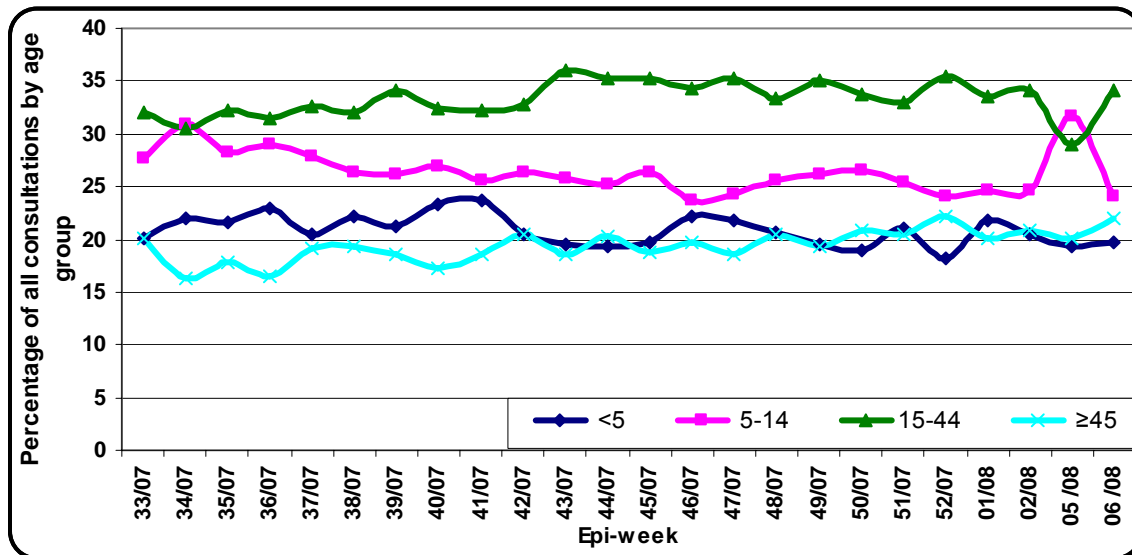


Figure 2. Weekly trend of total number of consultations by age group, Flood Affected districts, Sindh, 11 August 2007 - 8 February 2008.

There were 49,267 cases of acute diarrhoea (AD), there were 64,223 cases of lower respiratory infection and 114,537 cases were upper respiratory infection. The weekly proportion of ARI (URTI and LRTI) and AD is shown in figure 3.

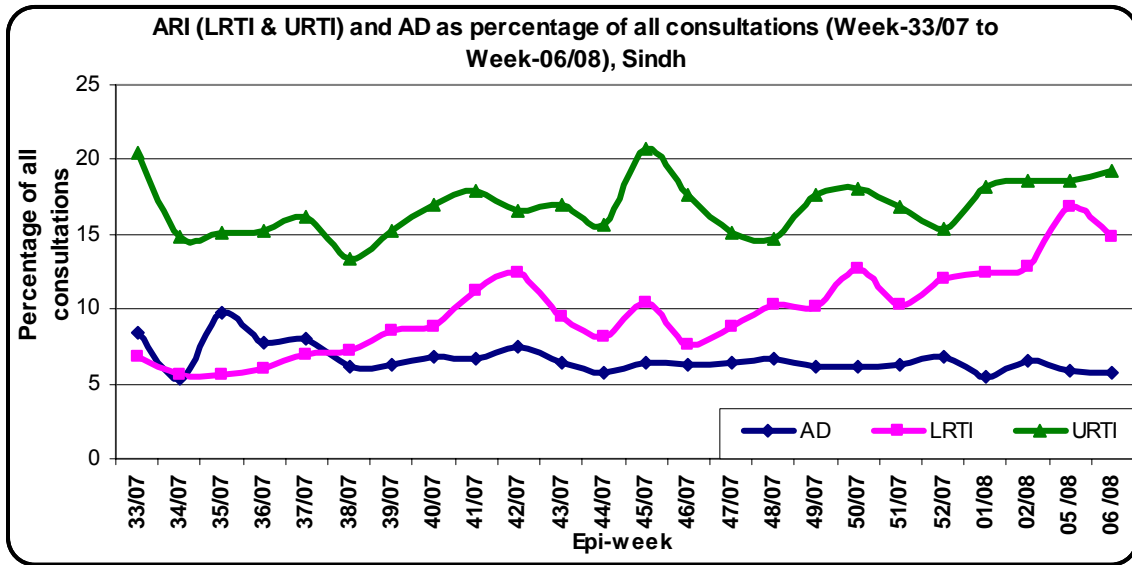


Figure 3. Weekly trend of percent of consultations for AD, URTI and LRTI, Flood Affected Areas, Sindh, 11 August 2007 – 8 February 2008.

Bloody Diarrhoea

There were 11,170 cases (2% of total consultations) of BD reported, out of which 2,602 cases were in patients less than 5 years of age, 3,075 in patients 5 – 14 years old, 3,430 in patients 15 – 44, and 2,063 in patients 45 and over. There was one death reported from Kamber district. The rate of acute diarrhoea differs by age group, with consultations 5-14 years of age group having the highest rate, while children age group less than 5 years of age having lowest rate in the current week. See Figure 4.

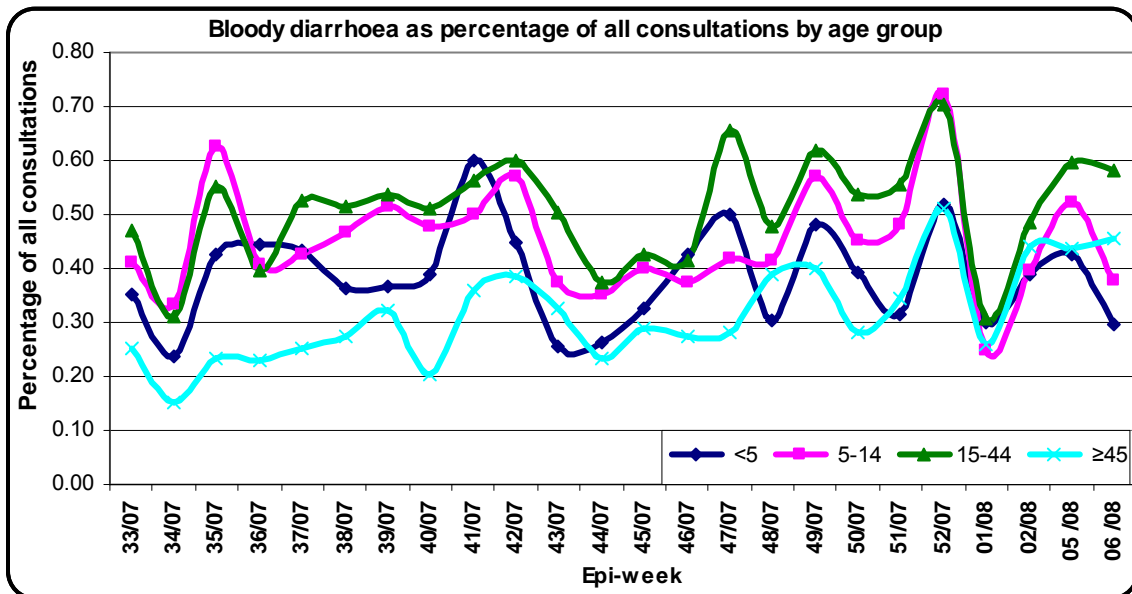


Figure 4: Trend of Bloody diarrhoea as a percent of all consultation, by age group, Flood Affected Areas, Sindh, 11 August 2007 – 8 February 2008

Malaria

There were 66,740 cases of malaria reported through DEWS system at Sindh. There were no associated deaths reported from any district. The age group 15-44 have the highest rate of malaria, while the rate of consultations in patients less than 5 years of age is the lowest. The age group 15-44 years has seen an increase in rate. See figure 5.

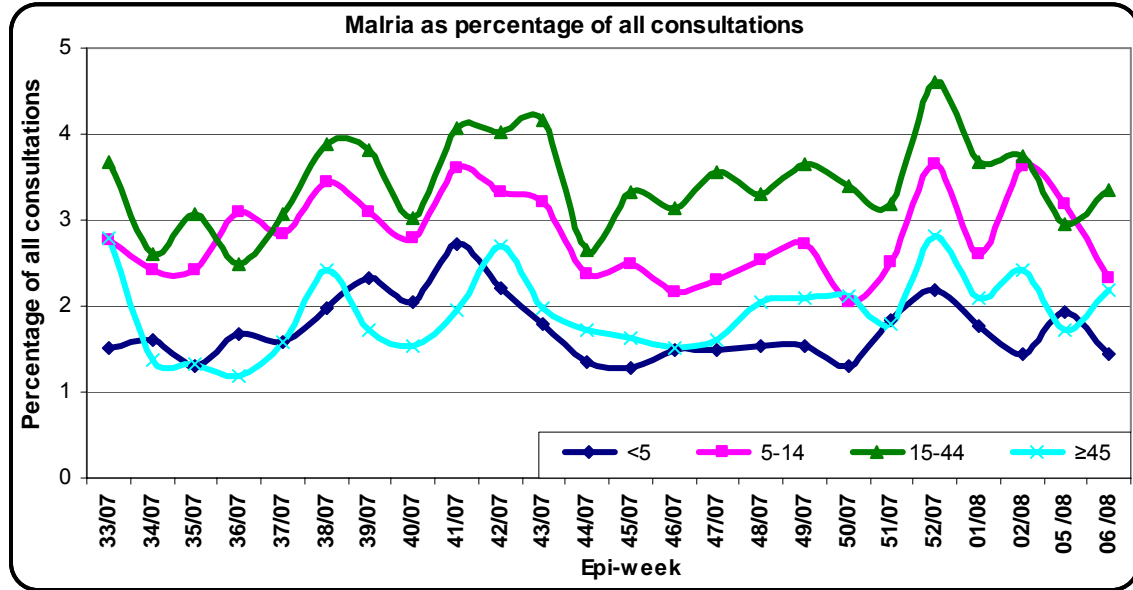


Figure 5: Trend of Malaria cases by age group, Flood Affected Areas, Sindh, 11 August 2007 –8 February 2008

Alert and Outbreak

District	Disease	Number of Cases	Alert / Outbreak
Badin	Suspected Cholera	2	Alert
Dadu	Hemorrhagic Fever	4	Alert
Dadu	Measles	15	Outbreak
Dadu	Meningitis	2	Alert
Kamber	Hemorrhagic Fever	5	Alert
Kamber	Measles	4	Alert