

Epidemiological Week No. 34 (18 - 24 Aug)

September 3/ Vol. 92/ DEWS 2007-34

## Contents

Reporting Units .....	2
Total number of consultations .....	2
DEWS Data, Epidemiological Week No. 34, 2007 .....	3
DEWS Data, Monthly Summary (Epidemiological Weeks No. 31-34) .....	4
Acute Watery Diarrhoea .....	5
Acute Jaundice Syndrome .....	6
Malaria .....	7
Acute Respiratory Infection .....	8
Other Reportable Diseases and Conditions .....	8
Outbreak Alert and Response .....	9
Number of reported cases and deaths per District, AJK .....	10
Number of reported cases and deaths per District, NWFP .....	11

Bagh: Polio Vaccination campaign  
Pictured by: Dr. Fawad Khan



## Highlights

- There were 447 cases of bloody diarrhoea reported in this week 34.
- Two suspected cases of acute watery diarrhoea reported from DHQ hospital, Bagh district
- Malaria cases decreased by 12% from week 33 (W33=632 & W34=563)
- Two suspected cases of acute watery diarrhoea were reported from AIMS hospital, Muzaffarabad district.
- Acute watery diarrhoea cases increased by 8% from week 33 (W33=10,375 & W34=9,614)

The Weekly Morbidity and Mortality Report (WMMR) is published by the Ministry of Health of Pakistan (MOH) and the World Health Organization (WHO). The WMMR is built on surveillance data that health service providers and NGOs transmit on a weekly basis from health facilities and hospitals in those areas affected by the earthquake that struck Pakistan on 8 October 2005.

The WMMR objectives are to monitor the trend of health conditions over a period of time and provide vital information to all health partners. The WMMR is only a snapshot of the health conditions in those facilities where events are registered and data collected and does not necessarily reflect the situation from other health facilities.

The WMMR is a publication that has been developed for emergencies and previously used in other areas such as the Darfur Crisis.

The WMMR is produced with the financial support of AAI Australia, Americares, CIDA, Denmark, DFID, ECHO, Ireland, Italy, Japan, Korea, Monaco, Norway, SIDA, Slovak Republic, Switzerland, Turkey, USAID

EUROPEAN COMMISSION



Humanitarian Aid



AUSTRALIAN  
AID INTERNATIONAL



Canadian International  
Development Agency



Sida



FROM THE AMERICAN PEOPLE

The WMMR is published by the World Health Organization (WHO),  
Health Emergency Operation Centre, National Park Road, Chak Shehzad, Islamabad, Pakistan.

For More Information, please contact:

Dorcas Taylor, Epidemiologist, WHO/EHA/Pakistan; [taylor@pak.emro.who.int](mailto:taylor@pak.emro.who.int) or

Dr. Birjees Mazher Kazi, Chief, Public Health Laboratories Division, NIH MOH; [kazis@isb.paknet.com.pk](mailto:kazis@isb.paknet.com.pk) or

WHO Webpage: <http://www.whopak.org/disaster>

## Reporting Units

The number of reporting sites able to report this week was 283; the reporting timeliness of the DEWS system has decreased by 3% compared to the previous week (epidemiological week 33). This is most likely due to an ongoing measles vaccination campaign which has removed many staff members from their posts.

See Table 1 for summary statistics.

Table 1. Reported health facilities by district, Earthquake Affected Areas, Pakistan, 28 July to 24 Aug 2007.

Area	Population	Reporting Health Facilities			
		28 July-3 Aug Week-31	4-10 Aug Week-32	11-17 Aug Week-33	18-24 Aug Week-34
Bagh	452,532	43	41	39	40
Battagram	592,256	29	31	34	30
Mansehra	1,154,804	71	70	70	71
Muzaffarabad	894,364	95	81	88	81
Poonch	633,712	74	71	66	61
<b>Total</b>	<b>3,727,668</b>	<b>312(93%)</b>	<b>294(88%)</b>	<b>297(87%)</b>	<b>283(84%)</b>

## Total number of consultations

In week 34, there was a 3% decrease in the number of reporting sites, but the number of consultations increased from 81,494 to 85,903. The highest number of consultations was reported from Muzaffarabad, with 25,365, and the lowest from Battagram district, at 7,390. The weekly trend of reporting units participating in the DEWS and the number of consultations is shown in figure 1.

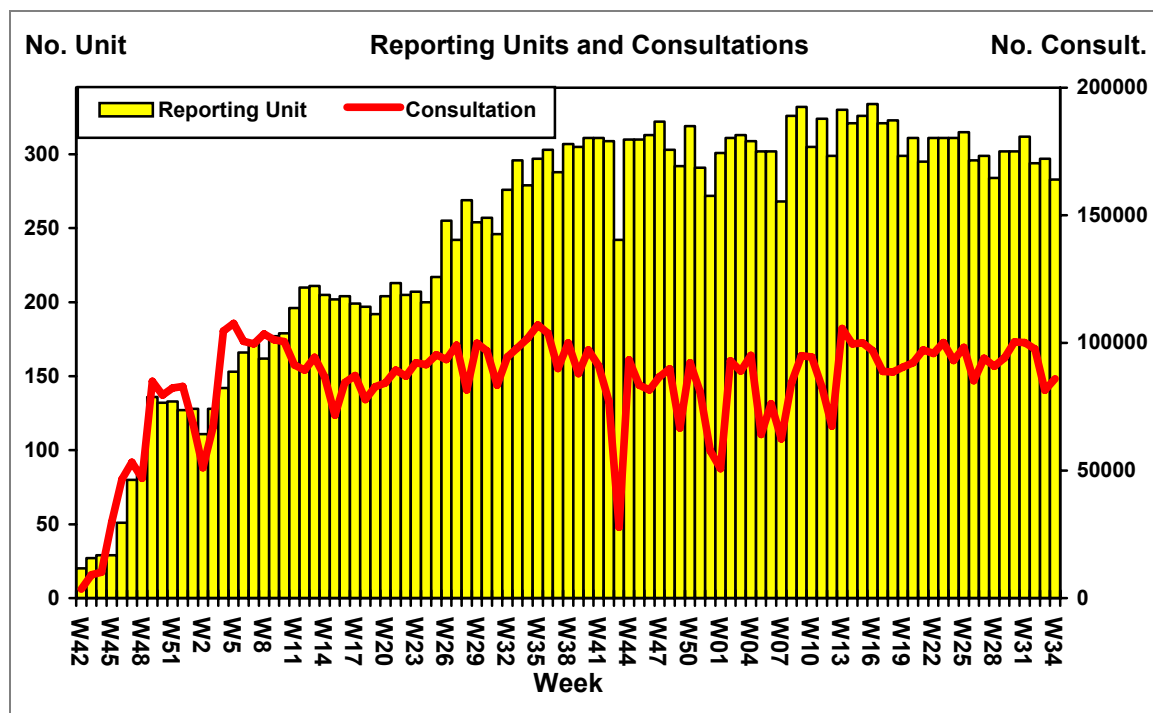


Figure 1. Weekly trend of reporting units and total number of consultations, Earthquake Affected Areas, Pakistan, 15 October 2005 - 24 Aug 2007.

**DEWS Data, Epidemiological Week No. 34, 2007**

During the last week (18 to 24 Aug, 2007), **85,903** consultations were reported through DEWS. Acute Respiratory Infections (**ARI**) accounted for **21%** (16,587) of consultations, which was 1 percentage point higher than the same week last year. Acute Watery Diarrhoea (**AWD**) made up **11%** of consultations (9,614), **5%** (4,688) were due to Fever of Unknown Origin (**FUO**) and less than **1%** (350) due to Injuries (**INJ**). The **AWD** rate in patients under five years was 2 percentage points lower in week 34 of 2007 when compared to the same week last year. In patients aged five and above, **AWD** made up **9%** of consultations which was 3 percentage points lower than reported in the same week last year. All other reportable conditions each represented less than **1%** of the total consultations in week 34.

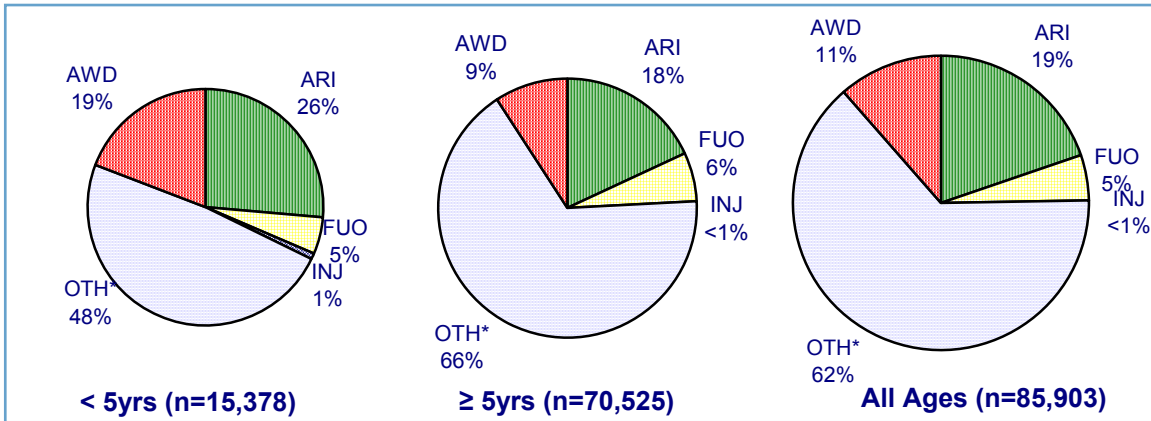


Figure 2. Proportion of primary causes for all reported cases, Earthquake Affected Areas, Pakistan, 18 - 24 Aug 2007.

\*OTH includes all other reportable conditions, plus all other consultations for conditions not under surveillance

**DEWS Data, Epidemiological Week No. 34, 2007: Consultations by age**

The rate of AWD in patients five years and older was consistently lower in last 4 weeks of 2007 compared with the same weeks in 2006. The rate in patients less than five years has also been lower in these four weeks of 2007, though in weeks 33 and 34, the rates were nearly identical. See figure 3.

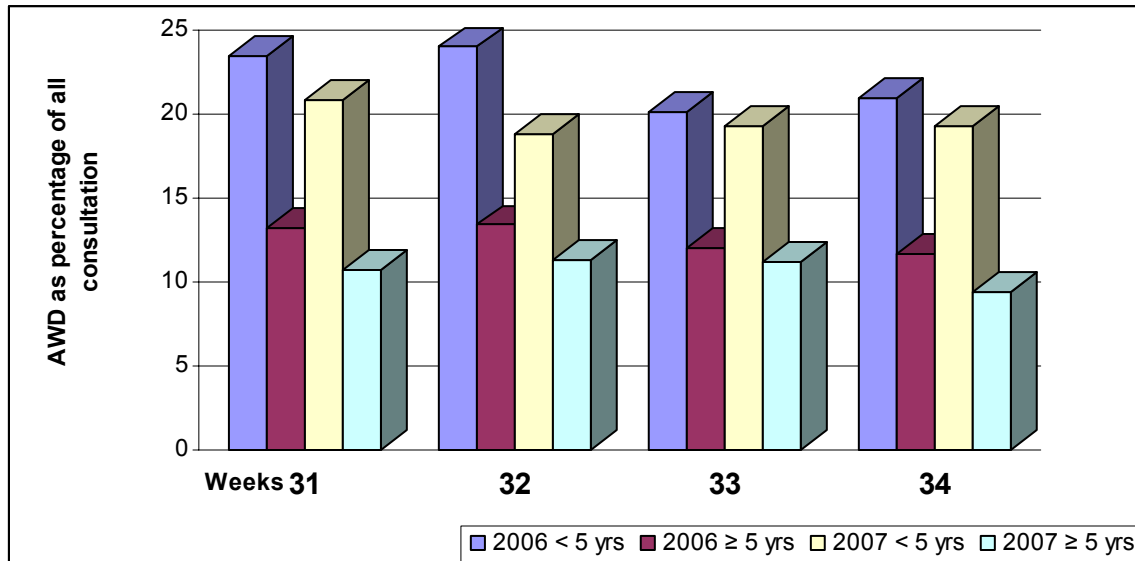


Figure 3: AWD as a percent of all consultations, by age group, Earthquake Affected Areas, Pakistan, 29 July - 25 Aug 2006 to 28 July - 24 Aug 2007

**DEWS Data, Monthly Summary (Epidemiological Weeks No. 31-34)**

During the period, 28 July to 24 Aug, 2007 (Epidemiological weeks 31 to 34 inclusive), 152,333 consultations relating to health conditions under surveillance were reported, out of the total of 365,065 consultations. **21%** (74,890) of consultations were due to acute respiratory infection (**ARI**), **12%** (45,015) acute watery diarrhoea (**AWD**), **7%** (26,392) unexplained fever (**FUO**) and less than **1%** (1,387) Injuries (**INJ**).

Table 2. Comparison of the weekly distribution of reported cases, deaths and monthly Case Fatality Rate (CFR), Earthquake Affected Areas, Pakistan, 28 July – 24 Aug 2007.

Week Event	WEEK 31		WEEK 32		WEEK 33		WEEK 34		TOTAL		CFR%
	C	D	C	D	C	D	C	D	C	D	
<b>AWD</b>	12669	0	12357	1	10375	2	9614	1	<b>45015</b>	<b>4</b>	<b>0.009</b>
<b>BD</b>	534	0	544	0	444	0	447	0	<b>1969</b>	<b>0</b>	<b>0.000</b>
<b>AFP</b>	1	0	0	0	2	0	0	0	<b>3</b>	<b>0</b>	<b>0.000</b>
<b>MAL</b>	721	0	676	0	632	0	563	0	<b>2592</b>	<b>0</b>	<b>0.000</b>
<b>ARI</b>	20430	3	20338	4	17535	2	16587	2	<b>74890</b>	<b>11</b>	<b>0.015</b>
<b>MES</b>	1	0	2	0	1	0	0	0	<b>4</b>	<b>0</b>	<b>0.000</b>
<b>MEN</b>	3	0	0	0	1	0	0	0	<b>4</b>	<b>0</b>	<b>0.000</b>
<b>JAU</b>	17	0	25	0	18	0	26	0	<b>86</b>	<b>0</b>	<b>0.000</b>
<b>TET</b>	0	0	0	0	0	0	0	0	<b>0</b>	<b>0</b>	<b>0.000</b>
<b>AHF</b>	0	0	0	0	0	0	0	0	<b>0</b>	<b>0</b>	<b>0.000</b>
<b>FUO</b>	7637	1	7622	0	6445	0	4688	0	<b>26392</b>	<b>1</b>	<b>0.004</b>
<b>INJ</b>	293	0	679	0	65	0	350	0	<b>1387</b>	<b>0</b>	<b>0.000</b>
<b>OTH</b>	57766	10	55353	20	45976	15	53628	25	<b>212723</b>	<b>70</b>	<b>0.033</b>
<b>TOTAL</b>	<b>100072</b>	<b>14</b>	<b>97596</b>	<b>25</b>	<b>81494</b>	<b>19</b>	<b>85903</b>	<b>28</b>	<b>365065</b>	<b>86</b>	
<b>RU</b>	<b>312</b>		<b>294</b>		<b>297</b>		<b>283</b>				

C – Cases, D – Deaths, AWD - Acute Diarrhoea, BD - Bloody Diarrhoea, AFP - Acute Flaccid Paralysis, MAL – Malaria, ARI - Acute Respiratory Infection, MES – Measles, Men - Meningitis, JAU - Acute Jaundice Syndrome, TET - Neonatal Tetanus, AHF Acute Hemorrhagic Fever, FUO –Unexplained fever, INJ – Injuries, OTH – Others, RU – Reporting Units. Please note data from late reporting in previous weeks has been updated.

During the same reporting period, **67,198** consultations were reported in children less than 5 years of age, (19% of the total consultations), of which **ARI** was **27%** (17,872), **AWD** **20%** (13,174), **FUO** **8%** (5,490) and **INJ** was less than **1%** (271).

Table 3. Total number of reported cases, deaths and monthly Case Fatality Rate (CFR), less than 5 years old, Earthquake Affected Areas, Pakistan 28July – 24Aug 2007.

Week Event	WEEK 31		WEEK 32		WEEK 33		WEEK 34		TOTAL		CFR%
	C	D	C	D	C	D	C	D	C	D	
<b>AWD</b>	3901	0	3372	1	2928	2	2973	1	<b>13174</b>	<b>4</b>	<b>0.030</b>
<b>BD</b>	107	0	153	0	106	0	134	0	<b>500</b>	<b>0</b>	<b>0.000</b>
<b>AFP</b>	1	0	0	0	2	0	0	0	<b>3</b>	<b>0</b>	<b>0.000</b>
<b>MAL</b>	66	0	95	0	54	0	78	0	<b>293</b>	<b>0</b>	<b>0.000</b>
<b>ARI</b>	5208	3	4569	4	4113	2	3982	1	<b>17872</b>	<b>10</b>	<b>0.056</b>
<b>MES</b>	0	0	1	0	1	0	0	0	<b>2</b>	<b>0</b>	<b>0.000</b>
<b>MEN</b>	3	0	0	0	0	0	0	0	<b>3</b>	<b>0</b>	<b>0.000</b>
<b>JAU</b>	1	0	2	0	5	0	3	0	<b>11</b>	<b>0</b>	<b>0.000</b>
<b>TET</b>	0	0	0	0	0	0	0	0	<b>0</b>	<b>0</b>	<b>0.000</b>
<b>AHF</b>	0	0	0	0	0	0	0	0	<b>0</b>	<b>0</b>	<b>0.000</b>
<b>FUO</b>	1604	1	1592	0	1504	0	790	0	<b>5490</b>	<b>1</b>	<b>0.018</b>
<b>INJ</b>	68	0	116	0	1	0	86	0	<b>271</b>	<b>0</b>	<b>0.000</b>
<b>OTH</b>	7802	6	8003	12	6442	7	7332	9	<b>29579</b>	<b>34</b>	<b>0.115</b>
<b>TOTAL</b>	<b>18761</b>	<b>10</b>	<b>17903</b>	<b>17</b>	<b>15156</b>	<b>11</b>	<b>15378</b>	<b>11</b>	<b>67198</b>	<b>49</b>	
<b>RU</b>	<b>312</b>		<b>294</b>		<b>297</b>		<b>283</b>				

There was an 8% decrease in the number of AWD cases from 10,375 to 9,614 since last week, and there was also a decrease in the number of ARI cases from 17,535 to 16,587 since last week. The weekly proportion of ARI and AWD is shown in figure 4.

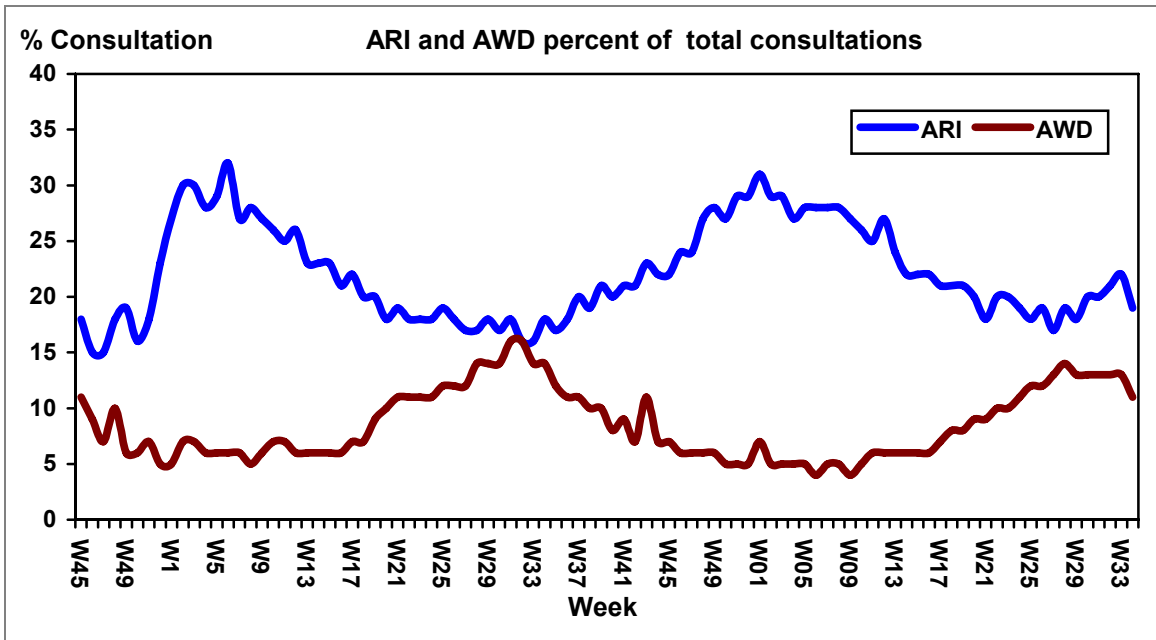


Figure 4. Weekly trend of percent of consultations for ARI and AWD, Earthquake Affected Areas, Pakistan, 15 October 2005 – 24 Aug 2007.

**Acute Watery Diarrhoea**

During week 34, there were 9,614 cases of AWD reported. There was one death in a patient less than five years old reported from Muzaffarabad. The rate of AWD has been consistently lower in 2007 than that seen in 2006. See figure 5.

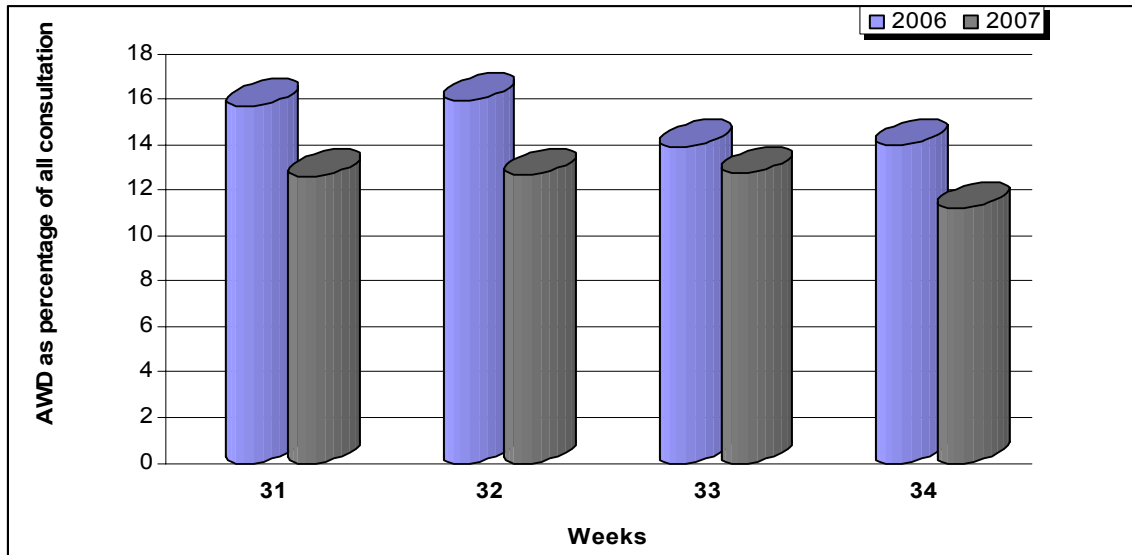


Figure 5: Trend in AWD as a percent of all consultations, 2007, Earthquake Affected Areas, Pakistan, 28 July - 24 Aug 2007

### Bloody Diarrhoea

During week 34, there were 447 suspected cases of bloody diarrhoea reported, which was less than 1% higher than week 33. There were no associated deaths reported from any district. The percentage of BD in 2007 has been lower than that seen in 2006 for the last four weeks. See figure 6.

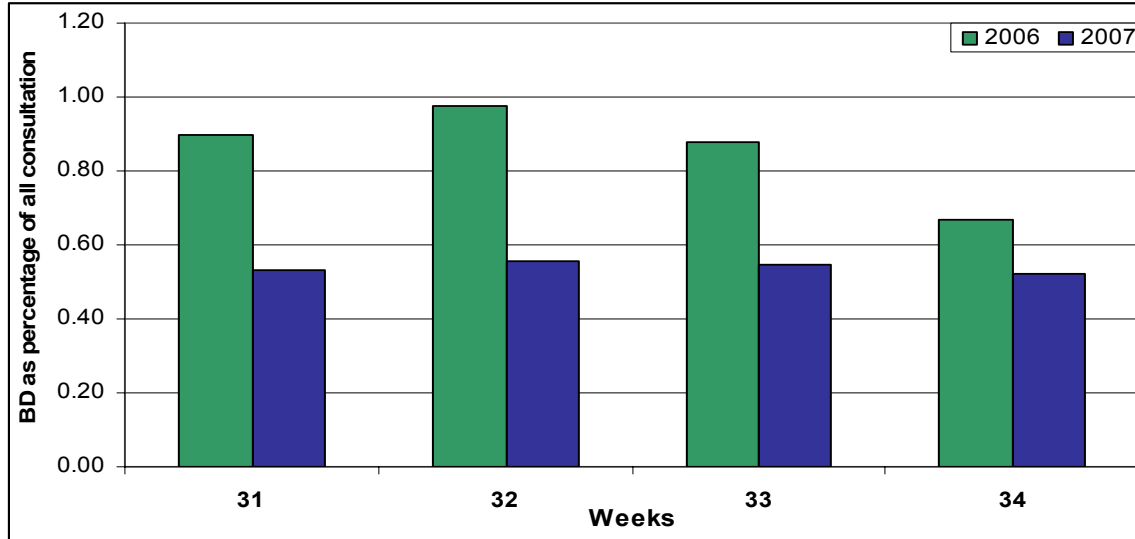


Figure 6: Trend in bloody diarrhoea as percentage of all consultations, 2006 and 2007, Earthquake Affected Areas, Pakistan, 29 July - 25 Aug 2006 to 28 July - 24 Aug 2007

### Acute Jaundice Syndrome

In week 34, there were 26 cases of suspected hepatitis reported out of which 9 cases were reported from Battagram, 8 cases reported from Bagh, 6 from Mansehra, and 3 cases from Muzaffarabad district. There were no associated deaths reported from any district. In 2007 the number of cases of hepatitis per week has been more steady than in 2006, when there were large fluctuations. See figure 7.

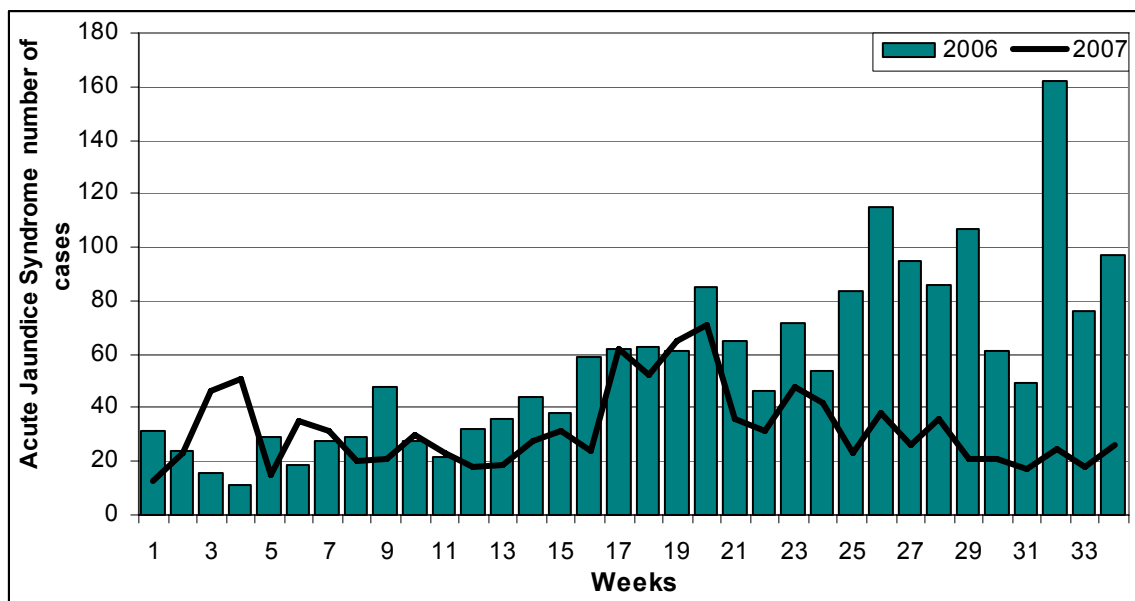


Figure 7: Trend in suspected hepatitis cases per reporting site, Earthquake Affected Areas, Pakistan, 29 July - 25 Aug 2006 to 28 July to 24 Aug, 2007.

**Malaria**

In week 34, there were 563 suspected cases of malaria reported, 12% lower than last week, out of which 485 cases were in patients over five years of age and 78 in patients less than five years of age. There were no associated deaths reported from any district. The rate of malaria in 2007 is very similar to that seen in 2006. See figure 8.

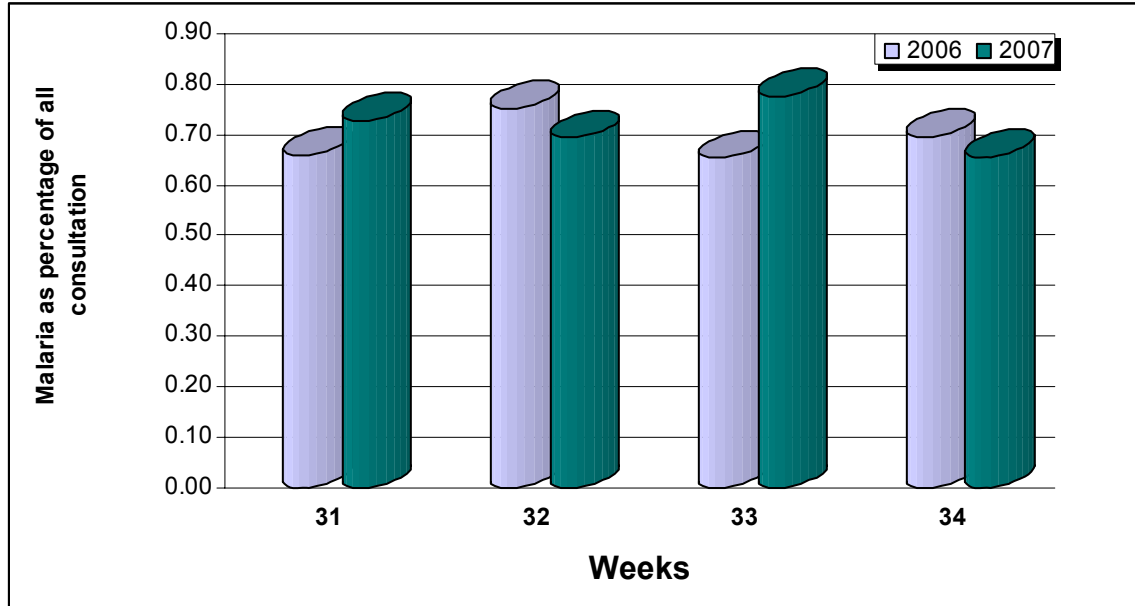


Figure 8: Trend in malaria as a percent of all consultations within age group, Earthquake Affected Areas, Pakistan, 29 July -25 Aug 2006 to 28 July - 24 Aug, 2007.

**Measles**

There were no cases of measles reported from any of the earthquake affected districts in week 34. There measles vaccination campaign is still ongoing in many earthquake districts, and it is expected that there will be even fewer cases in 2008 than that seen in 2007. See Figure 9.

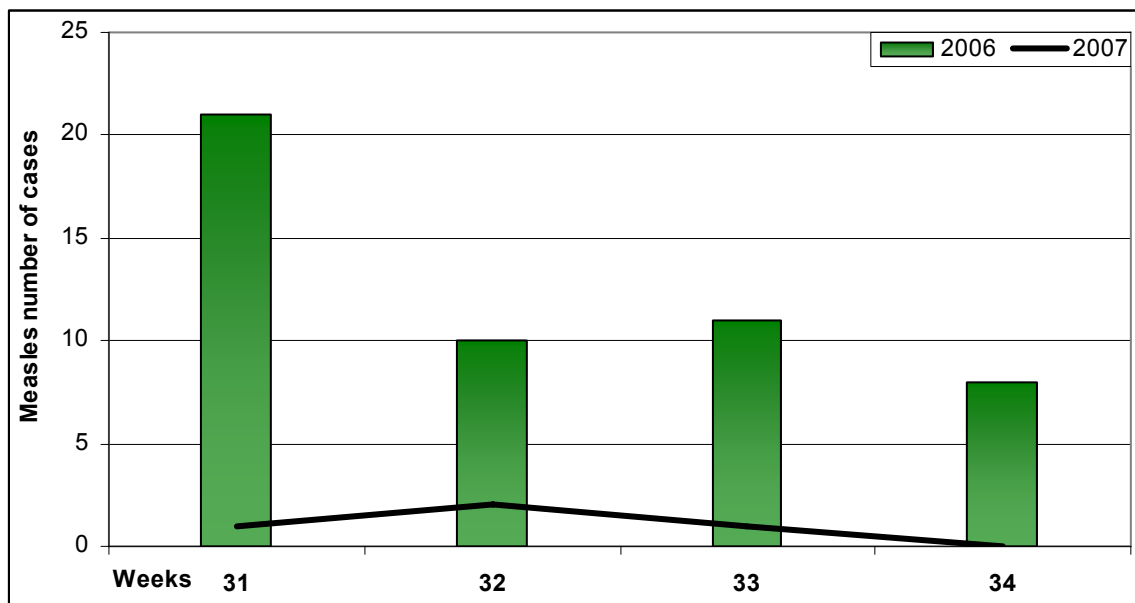


Figure 9: Trend in measles cases as a percent of all consultations, Earthquake Affected Areas, Pakistan, 29 July -25 Aug 2006 to 28 July - 24 Aug, 2007

**Acute Respiratory Infection**

In week 34, there were 16,587 consultations for ARI reported through the DEWS system. There were two deaths reported in week 34; one death in a patient less than 5 years old reported from Rawalakot and a second death in a patient over five years of age reported from Mansehra district. The rate of ARI has been consistently higher in 2007 than that seen in the same weeks of 2006. See Figure 10.

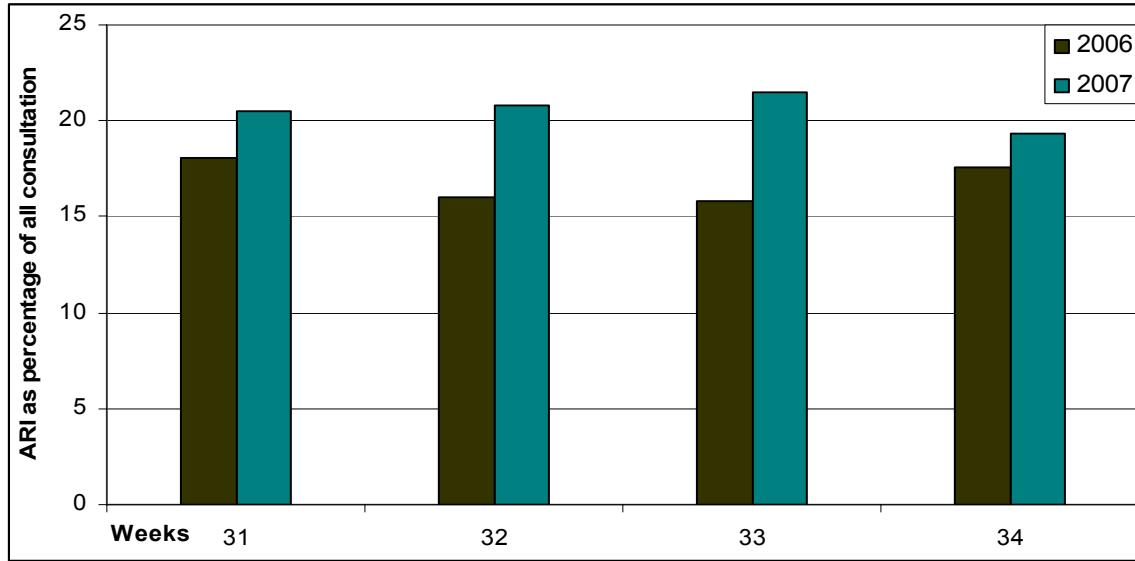


Figure 10: ARI as a percent of all consultations, by district, Earthquake Affected Areas, Pakistan, 29July- 25 Aug 2006 to 28 July - 24 Aug 2007

**Other Reportable Diseases and Conditions**

There were 350 cases of injuries and 4,688 cases of Fever of Unknown Origin (FUO) reported in week 34. There were no deaths reported from any district. There were no cases of meningitis, tetanus and acute hemorrhagic fever reported from any district in week 34. See figure 11.

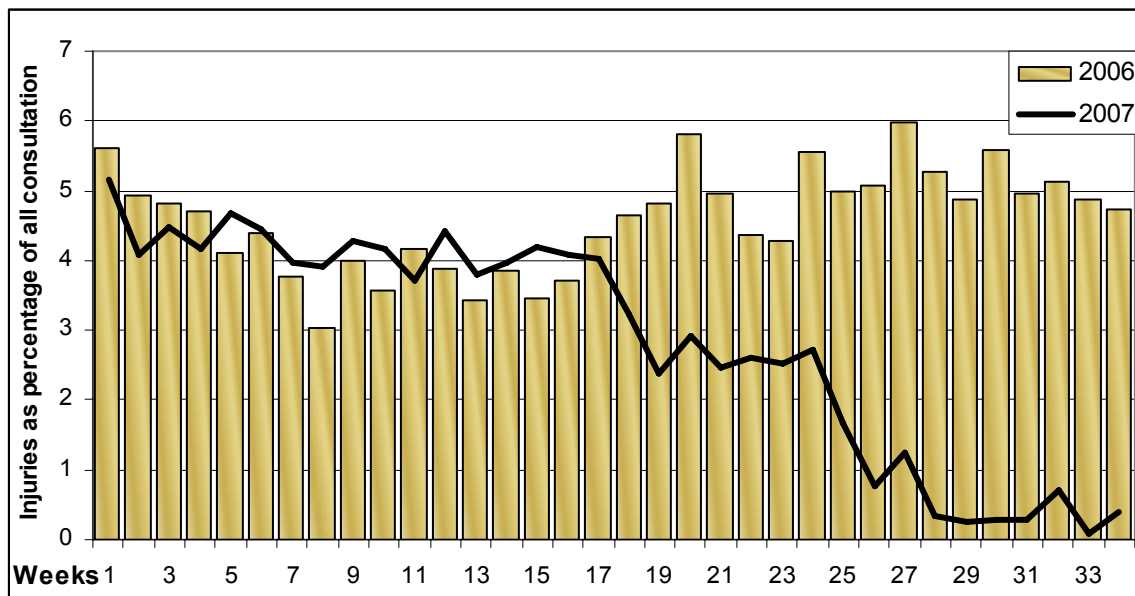


Figure 11: Injuries as a percentage of all consultations, Earthquake Affected Areas, Pakistan, 31Dec 05-25 Aug 2006 to 30 Dec 06- 24 Aug 2007

## Outbreak Alert and Response<sup>1</sup>

### Acute watery diarrhoea

#### Bagh

On 24<sup>th</sup> of August 2007, DHQ hospital Bagh reported a case of acute watery diarrhea. The patient was resident of village Chinat. On active surveillance of the village there were no further cases identified with same sign and symptoms. A stool sample was taken and sent to NIH for laboratory confirmation. The water source was tested and found to be contaminated. Cleaning and chlorination of the water tank in the village was done with the help of WATSAN partners and hygiene education was given to the people in the village.

#### Muzaffarabad

On 21<sup>st</sup> of August 2007, BHU Raheemkot reported an increase in the number of acute watery diarrhea cases. The WHO surveillance team visited the area and observed that the hygiene conditions were very poor in Raheemkot. Open defecation was a common practice, cattle were grazing near the water sources and overall water and sanitation situation was poor. Two stool samples were collected and have been sent to NIH for laboratory confirmation. Water was tested and found to be unfit for consumption. Medicine was provided to the BHU, and hygiene kits were distributed with the assistance of UNICEF to all of the surrounding community. Health education activities were undertaken in the local schools, and a community health committee formed. There was a demonstration on water purification using chlorine tablets by WHO staff. IRC is also undertaking a water scheme in the area that should rectify the water problems on a long-term basis. The number of cases has now decreased significantly, and the situation is under control.

On 22<sup>nd</sup> August 2007, two alerts of AWD were received, one alert reported from MERLIN medical team at CTC-CMH Muzaffarabad and second alert was reported from RHC Lamnian. WHO surveillance team investigated both alerts and two samples were collected and sent to NIH for laboratory confirmation. Hygiene promotion was carried out in the community.

### Acute Jaundice syndrome

#### Bagh

On 23<sup>rd</sup> of August 2007, a school headmaster resident of mohalla Jholay, village Chore informed WHO Office Bagh about a number of suspected acute jaundice cases in the mohalla. On active surveillance 2 patients were found in the acute phase of the illness. A blood sample was taken and sent to NIH for laboratory confirmation. The water source used by the affected people was a partially protected spring which was found contaminated. Extensive hygiene education was given to the community on boiling of drinking water, washing hands before and after use of toilet. LHWs working in the area were contacted and advised to start door to door active hygiene sessions in the village. Chlorine tablets will be distributed with the help of LHWs. DHO and WATSAN cluster partners were informed and briefed about the situation.

<sup>1</sup> Outbreak Investigation and response of Suspected Viral Hepatitis, Malaria, and Bloody Diarrhoea and Watery Diarrhoea would only take place when a cluster of cases is identified or there is an increase in the incidence of the disease.  
(Note: Single death due to Diarrhoea and single case of reported severe dehydration among >5 years would be investigated)

**Number of reported cases and deaths per District, AJK**Table 6. Number of reported cases and deaths, **Bagh District\***, Earthquake Affected Areas, Pakistan, 28 July -24 Aug 2007.

Week	AWD		BD		AFP		MAL		ARI		MEA		MEN		JAU		TET		AHF		UXF		INJ		OTH	
	C	D	C	D	C	D	C	D	C	D	C	D	C	D	C	D	C	D	C	D	C	D	C	D	C	D
31	1240	0	33	0	0	0	91	0	2327	0	1	0	0	0	3	0	0	0	0	0	319	0	0	0	11235	3
32	1139	0	26	0	0	0	119	0	2089	1	0	0	0	0	7	0	0	0	0	0	324	0	14	0	10982	3
33	880	0	26	0	0	0	76	0	1912	0	1	0	0	0	6	0	0	0	0	0	343	0	0	0	7735	2
34	1001	0	23	0	0	0	87	0	1950	0	0	0	0	0	8	0	0	0	0	0	340	0	0	0	11222	8
<b>Total</b>	<b>4260</b>	<b>0</b>	<b>108</b>	<b>0</b>	<b>0</b>	<b>0</b>	<b>373</b>	<b>0</b>	<b>8278</b>	<b>1</b>	<b>2</b>	<b>0</b>	<b>0</b>	<b>0</b>	<b>24</b>	<b>0</b>	<b>0</b>	<b>0</b>	<b>0</b>	<b>0</b>	<b>1326</b>	<b>0</b>	<b>14</b>	<b>0</b>	<b>41174</b>	<b>16</b>

Table 7. Number of reported cases and deaths, **Poonch District\***, Earthquake Affected Areas, Pakistan, 28 July -24 Aug 2007.

Week	AWD		BD		AFP		MAL		ARI		MEA		MEN		JAU		TET		AHF		UXF		INJ		OTH	
	C	D	C	D	C	D	C	D	C	D	C	D	C	D	C	D	C	D	C	D	C	D	C	D	C	D
31	3053	0	40	0	0	0	341	0	3540	0	0	0	0	0	2	0	0	0	0	0	2301	0	0	0	8166	2
32	2377	0	29	0	0	0	292	0	3660	1	0	0	0	0	4	0	0	0	0	0	2121	0	0	0	7167	3
33	2410	1	43	0	0	0	279	0	3514	0	0	0	0	0	1	0	0	0	0	0	2095	0	0	0	7732	3
34	2342	0	26	0	0	0	194	0	3453	1	0	0	0	0	0	0	0	0	0	0	2119	0	0	0	7416	4
<b>Total</b>	<b>10182</b>	<b>1</b>	<b>138</b>	<b>0</b>	<b>0</b>	<b>0</b>	<b>1106</b>	<b>0</b>	<b>14167</b>	<b>2</b>	<b>0</b>	<b>0</b>	<b>0</b>	<b>0</b>	<b>7</b>	<b>0</b>	<b>0</b>	<b>0</b>	<b>0</b>	<b>0</b>	<b>8636</b>	<b>0</b>	<b>0</b>	<b>0</b>	<b>30481</b>	<b>12</b>

Table 8. Number of reported cases and deaths, **Muzaffarabad District\***, Earthquake Affected Areas, Pakistan, 28 July -24 Aug 2007.

Week	AWD		BD		AFP		MAL		ARI		MEA		MEN		JAU		TET		AHF		UXF		INJ		OTH	
	C	D	C	D	C	D	C	D	C	D	C	D	C	D	C	D	C	D	C	D	C	D	C	D	C	D
31	4852	0	314	0	0	0	193	0	9104	2	0	0	0	0	3	0	0	0	0	0	3469	1	293	0	20762	2
32	5434	1	342	0	0	0	157	0	9331	0	1	0	0	0	8	0	0	0	0	0	3662	0	665	0	18167	10
33	3887	1	232	0	0	0	138	0	7751	1	0	0	1	0	4	0	0	0	0	0	2550	0	62	0	16965	2
34	2941	1	248	0	0	0	165	0	5503	0	0	0	0	0	3	0	0	0	0	0	759	0	342	0	15404	9
<b>Total</b>	<b>17114</b>	<b>3</b>	<b>1136</b>	<b>0</b>	<b>0</b>	<b>0</b>	<b>653</b>	<b>0</b>	<b>31689</b>	<b>3</b>	<b>1</b>	<b>0</b>	<b>1</b>	<b>0</b>	<b>18</b>	<b>0</b>	<b>0</b>	<b>0</b>	<b>0</b>	<b>0</b>	<b>10440</b>	<b>1</b>	<b>1362</b>	<b>0</b>	<b>71298</b>	<b>23</b>

**Number of reported cases and deaths per District, NWFP**Table 9. Number of reported cases and deaths, **Battagram District\***, Earthquake Affected Areas, Pakistan, 28 July -24 Aug 2007.

Week	AWD		BD		AFP		MAL		ARI		MEA		MEN		JAU		TET		AHF		UXF		INJ		OTH	
	C	D	C	D	C	D	C	D	C	D	C	D	C	D	C	D	C	D	C	D	C	D	C	D	C	D
31	874	0	122	0	0	0	71	0	556	0	0	0	0	0	7	0	0	0	0	0	458	0	0	0	2746	0
32	1138	0	114	0	0	0	77	0	1060	0	0	0	0	0	6	0	0	0	0	0	340	0	0	0	2972	1
33	1255	0	118	0	0	0	90	0	1204	0	0	0	0	0	5	0	0	0	0	0	404	0	3	0	3503	0
34	1142	0	126	0	0	0	60	0	1449	0	0	0	0	0	9	0	0	0	0	0	437	0	8	0	4159	0
<b>Total</b>	<b>4409</b>	<b>0</b>	<b>480</b>	<b>0</b>	<b>0</b>	<b>0</b>	<b>298</b>	<b>0</b>	<b>4269</b>	<b>0</b>	<b>0</b>	<b>0</b>	<b>0</b>	<b>0</b>	<b>27</b>	<b>0</b>	<b>0</b>	<b>0</b>	<b>0</b>	<b>0</b>	<b>1639</b>	<b>0</b>	<b>11</b>	<b>0</b>	<b>13380</b>	<b>1</b>

Table 10. Number of reported cases and deaths, **Mansehra District\***, Earthquake Affected Areas, Pakistan, 28 July -24 Aug 2007.

Week	AWD		BD		AFP		MAL		ARI		MEA		MEN		JAU		TET		AHF		UXF		INJ		OTH	
	C	D	C	D	C	D	C	D	C	D	C	D	C	D	C	D	C	D	C	D	C	D	C	D	C	D
31	2650	0	25	0	1	0	25	0	4903	1	0	0	3	0	2	0	0	0	0	0	1090	0	0	0	14859	3
32	2269	0	33	0	0	0	31	0	4198	2	1	0	0	0	0	0	0	0	0	0	1175	0	0	0	16065	1
33	1943	0	21	0	2	0	49	0	3154	1	0	0	0	0	2	0	0	0	0	0	1053	0	0	0	10041	3
34	2188	0	24	0	0	0	57	0	4232	1	0	0	0	0	6	0	0	0	0	0	1033	0	0	0	15427	4
<b>Total</b>	<b>9050</b>	<b>0</b>	<b>103</b>	<b>0</b>	<b>3</b>	<b>0</b>	<b>162</b>	<b>0</b>	<b>16487</b>	<b>5</b>	<b>1</b>	<b>0</b>	<b>3</b>	<b>0</b>	<b>10</b>	<b>0</b>	<b>0</b>	<b>0</b>	<b>0</b>	<b>0</b>	<b>4351</b>	<b>0</b>	<b>0</b>	<b>0</b>	<b>56392</b>	<b>11</b>