

## Contents

Reporting Units .....	2
Total number of consultations .....	2
DEWS Data, Epidemiological Week N <sup>o</sup> 46 2006.....	3
DEWS Data, Monthly Summary (Epidemiological Weeks N <sup>o</sup> 43-46) .....	4
Acute Watery Diarrhoea .....	5
Bloody Diarrhoea.....	6
Acute Jaundice Syndrome.....	6
Malaria .....	7
Measles .....	7
Acute Respiratory Infection .....	8
Other Reportable Diseases and Conditions .....	8
Outbreak Alert and Response .....	9
Number of reported cases and deaths per District, AJK .....	10
Number of reported cases and deaths per District, NWFP .....	11



Muzaffarabad  
Picture by Osama Ali Maher

## Highlights

- In the past month (Epidemiological weeks 43-46 inclusive), 121,097 health events under surveillance were reported including 63 deaths
- This week, there were 295 reporting units contributing to the report.
- In week 46, Total 79,431 consultations were reported, with 26 deaths
- In week 46, there were three deaths from acute respiratory infection.
- Seven suspected cases of meningitis reported this week, all cases were from Muzaffarabad district.
- Malaria cases decreased by 35%.

The Weekly Morbidity and Mortality Report (WMMR) is published by the Ministry of Health of Pakistan (MOH) and the World Health Organization (WHO). The WMMR is built on surveillance data that health service providers and NGOs transmit on a weekly basis from health facilities and hospitals in those areas affected by the earthquake that struck Pakistan on 8 October 2005.

The WMMR objectives are to monitor the trend of health conditions over a period of time and provide vital information to all health partners. The WMMR is only a snapshot of the health conditions in those facilities where events are registered and data collected and does not necessarily reflect the situation from other health facilities.

The WMMR is a publication that has been developed for emergencies and previously used in other areas such as the Darfur Crisis.

The WMMR is produced with the financial support of AAI Australia, Americares, CIDA, Denmark, DFID, ECHO, Ireland, Italy, Japan, Korea, Monaco, Norway, SIDA, Slovak Republic, Switzerland, Turkey, USAID



Canadian International  
Development Agency



Sida  
USAID  
FROM THE AMERICAN PEOPLE

The WMMR is published by the World Health Organization (WHO),  
Health Emergency Operation Centre, House #6, Street #20, F-7/2, Islamabad, Pakistan  
For More Information, please contact:

Dorcas Taylor, Epidemiologist, WHO/EHA/Pakistan; [taylorde@epak.emro.who.int](mailto:taylorde@epak.emro.who.int) or  
Dr. Birjees Mazher Kazi, Chief, Public Health Laboratories Division, NIH MOH; [kazis@isb.paknet.com.pk](mailto:kazis@isb.paknet.com.pk) or  
WHO Webpage: <http://www.whopak.org/disaster>

### Reporting Units

The number of sites able to report decreased by 5 this week and the reporting timelines of the DEWS systems has also decreased at the current Epidemiological week compared with last week 45. See Table 1 for summary statistics.

Table1. Reported health facilities by district, Earthquake Affected Areas, Pakistan, 21 Oct - 17 Nov 2006.

Area	Population	Reporting Health Facilities			
		21-27 Oct Week 43	28 Oct-3Nov Week 44	4-10 Nov Week 45	11-17 Nov Week 46
Muzaffarabad	894,364	66	80	97	80
Bagh	452,532	35	43	43	44
Poonch	633,712	52	68	63	64
Mansehra / Balakot	1,154,804	64	66	65	65
Battagram / Shangla	592,256	25	34	42	42
<b>Total</b>	<b>3,727,668</b>	<b>242(74%)</b>	<b>310(95%)</b>	<b>310(95%)</b>	<b>295(91%)</b>

### Total number of consultations

In week 46, there was a decrease in the number of reporting sites, and the number of consultations also decreased to 79,431. The highest number of consultations by district was in Muzaffarabad, with 24,913 and the lowest was in Battagram, at 5,993. The decline in the number of consultations in week 43 was related to Eid-ul-Fitr leave. A similar drop can be seen in week 2, which corresponded with Eid-ul-Azha last year.

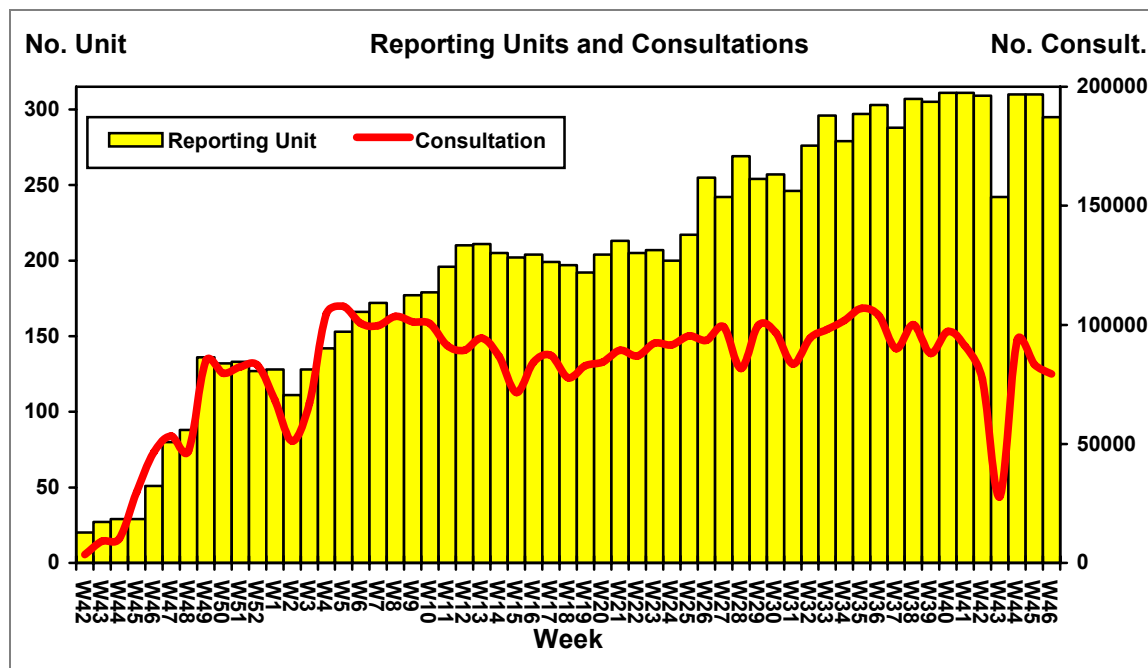


Figure 1. Weekly trend of reporting units and total number of consultations, Earthquake Affected Areas, Pakistan, 15 October 2005 – 17 Nov 2006.

**DEWS Data, Epidemiological Week No. 46, 2006**

Between 11 to 17 Nov 2006, **79,431** consultations were reported through DEWS. Overall, **24%** (19,291) were due to acute respiratory infections (**ARI**), **6%** (4,871) due to acute watery diarrhoea (**AWD**), **7%** (5,440) due to fever of unknown origin (**FUO**), and **5%** (3,852) due to injuries (**INJ**). **ARI** accounted for **33%** and **21%** of consultations in the less than 5 years old and 5 or more years old respectively. All other reportable conditions each represented less than 1% of the total consultations in week 46.

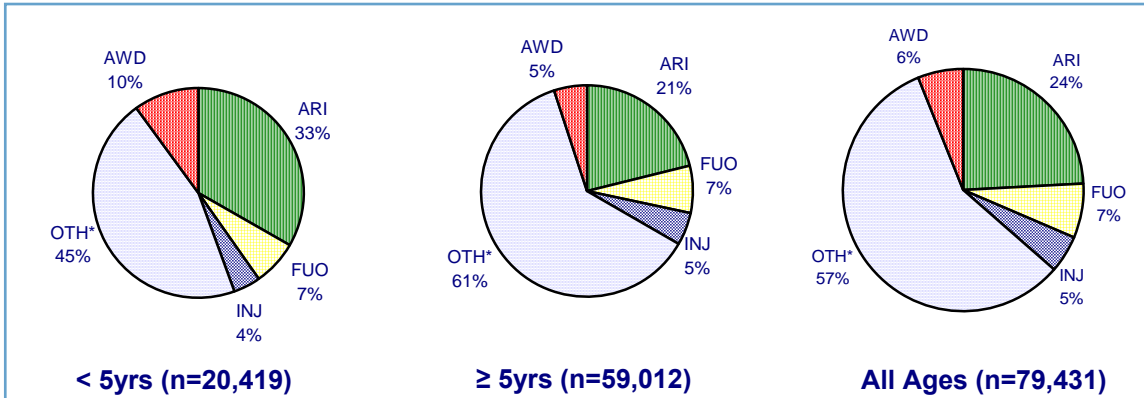


Figure 2. Proportion of primary causes for all reported cases, Earthquake Affected Areas, Pakistan, 11-17 Nov 2006.

\*OTH includes all other reportable conditions, plus all other consultations for conditions not under surveillance

**DEWS Data, Epidemiological Week No. 43, 2006: Consultations by age**

The rate of ARI in children under 5 has been climbing since the end of summer. However, the rate of increase differs within a given reporting site. If the average by reporting site is compared by district, most districts have only very mild increases in rates, while others such as Bagh, have seen the average rate in a reporting site climb from under 30% to over 40% since the beginning of October. See figure 3.

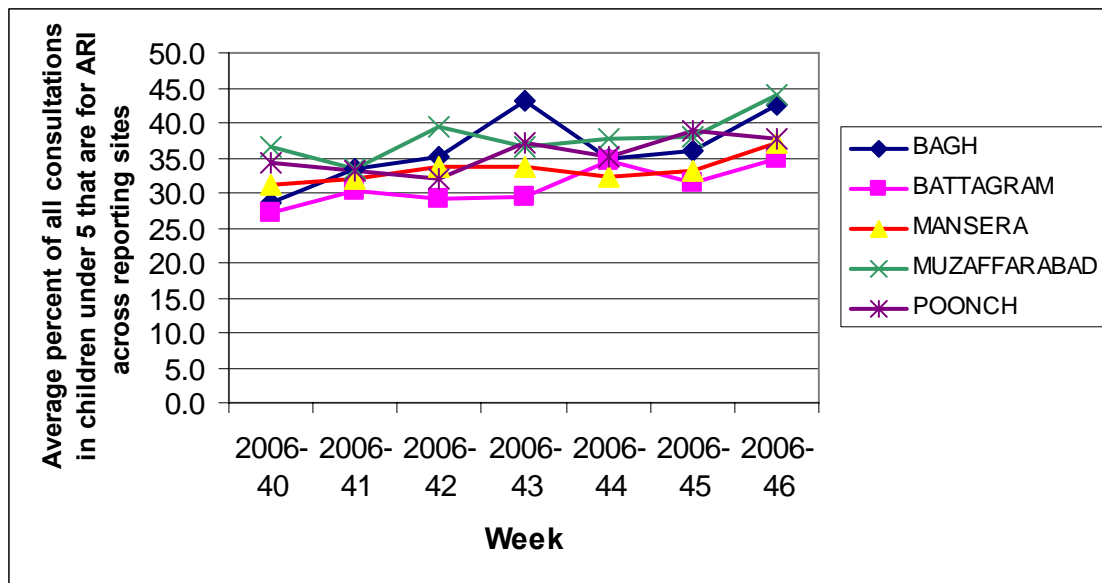


Figure 3: Trend in the average percent of consultations in under 5s that are for ARI across reporting sites, by district, Earthquake Affected Areas, Pakistan 29 September – 17 November 2006.

**DEWS Data, Monthly Summary (Epidemiological Weeks No. 43-46)**

In the past four weeks, between 21 Oct to 17 Nov, 2006 (Epidemiological weeks 43-46 inclusive), 121,097 consultations for health conditions under surveillance were reported, out of a total 283,968 consultations. **23%** (64,727) of consultations were due to acute respiratory infection (**ARI**), **7%** (19,440) acute watery diarrhoea (**AWD**), **6%** (18,408) unexplained fever (**FUO**) and **5%** (14,364) Injuries (**INJ**).

Table 2. Comparison of the weekly distribution of reported cases, deaths and monthly Case Fatality Rate (CFR), Earthquake Affected Areas, Pakistan, 11-17 Nov 2006.

Week Event	WEEK 43		WEEK 44		WEEK 45		WEEK 46		TOTAL		CFR%
	C	D	C	D	C	D	C	D	C	D	
<b>AWD</b>	2923	1	6189	0	5457	1	4871	2	19440	4	0.020
<b>BD</b>	228	0	569	0	471	0	298	0	1566	0	0.000
<b>AFP</b>	1	0	0	0	2	0	1	0	4	0	0.000
<b>MAL</b>	282	0	797	0	776	0	508	0	2363	0	0.000
<b>ARI</b>	6511	1	20636	3	18289	2	19291	3	64727	9	0.139
<b>MES</b>	0	0	2	0	1	0	3	0	6	0	0.000
<b>MEN</b>	3	0	7	0	8	0	7	1	25	1	0.000
<b>JAU</b>	30	0	78	0	42	0	42	0	192	0	0.000
<b>TET</b>	2	0	0	0	0	0	0	0	2	0	0.000
<b>AHF</b>	0	0	0	0	0	0	0	0	0	0	0.000
<b>FUO</b>	2251	0	5700	1	5017	0	5440	0	18408	1	0.005
<b>INJ</b>	1754	0	4417	0	4341	0	3852	0	14364	0	0.000
<b>OTH</b>	13806	12	54950	6	48997	10	45118	20	162871	48	0.029
<b>TOTAL</b>	<b>27791</b>	<b>14</b>	<b>93345</b>	<b>10</b>	<b>83401</b>	<b>13</b>	<b>79431</b>	<b>26</b>	<b>283968</b>	<b>63</b>	
<b>RU</b>	<b>242</b>		<b>310</b>		<b>310</b>		<b>295</b>				

C – Cases, D – Deaths, AWD - Acute Diarrhoea, BD - Bloody Diarrhoea, AFP - Acute Flaccid Paralysis, MAL – Malaria, ARI - Acute Respiratory Infection, MES – Measles, Men - Meningitis, JAU - Acute Jaundice Syndrome, TET - Neonatal Tetanus, AHF Acute Hemorrhagic Fever, FUO –Unexplained fever, INJ – Injuries, OTH – Others, RU – Reporting Units. Please note data from late reporting in previous weeks has been updated.

During the same reporting period **72,045** consultations were reported in the **less than 5 years old** group, (**25%** of the total consultations), of which **31%** (22,621) were due to **ARI**, **11%** (8,007) due to **AWD**, **7%** (5,198) due to **FUO** and **4%** (2,925) were reported as injuries (**INJ**).

Table 3. Total number of reported cases, deaths and monthly Case Fatality Rate (CFR), less than 5 years old, Earthquake Affected Areas, Pakistan 11-17 Nov 2006.

Week Event	WEEK 43		WEEK 44		WEEK 45		WEEK 46		TOTAL		CFR%
	C	D	C	D	C	D	C	D	C	D	
<b>AWD</b>	1055	1	2582	0	2267	1	2103	2	8007	4	0.049
<b>BD</b>	57	0	198	0	158	0	84	0	497	0	0.000
<b>AFP</b>	0	0	0	0	1	0	1	0	2	0	0.000
<b>MAL</b>	47	0	166	0	183	0	89	0	485	0	0.000
<b>ARI</b>	2159	1	7276	3	6455	2	6731	3	22621	9	0.039
<b>MES</b>	0	0	2	0	1	0	3	0	6	0	0.000
<b>MEN</b>	0	0	1	0	0	0	1	0	2	0	0.000
<b>JAU</b>	7	0	13	0	7	0	9	0	36	0	0.000
<b>TET</b>	2	0	0	0	0	0	0	0	2	0	0.000
<b>AHF</b>	0	0	0	0	0	0	0	0	0	0	0.000
<b>FUO</b>	685	0	1760	0	1361	0	1392	0	5198	0	0.000
<b>INJ</b>	330	0	957	0	830	0	808	0	2925	0	0.000
<b>OTH</b>	2739	3	10736	4	9591	6	9198	5	32264	18	0.055
<b>TOTAL</b>	<b>7081</b>	<b>5</b>	<b>23691</b>	<b>7</b>	<b>20854</b>	<b>9</b>	<b>20419</b>	<b>10</b>	<b>72045</b>	<b>31</b>	
<b>RU</b>	<b>242</b>		<b>310</b>		<b>310</b>		<b>295</b>				

In the current week, there was a decrease in the number of cases of **AWD** with **5,457** last week and **4,871** this week. In the current week, **ARI** increased in total number of cases as compared with the previous week, (**18,289** last week and **19,291** this week). The weekly proportion of ARI and AWD is shown in figure 4.

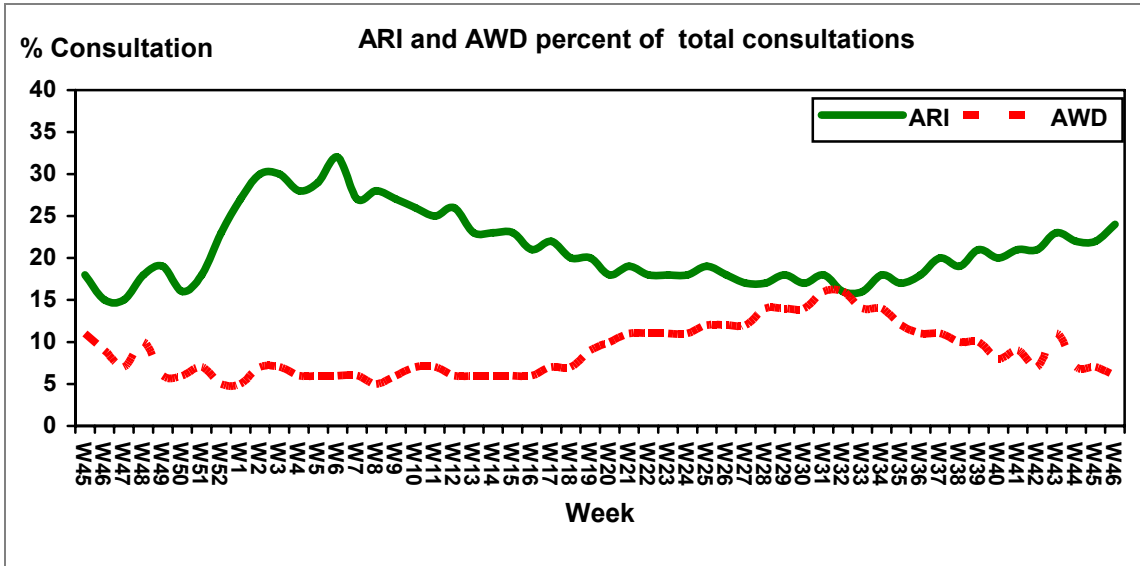


Figure 4. Weekly trend of percent of consultations for ARI and AWD, Earthquake Affected Areas, Pakistan, 5 November 2005 - 17 November 2006.

### Acute Watery Diarrhoea

In week 46 there were 4,871 cases of AWD reported, with two associated deaths, in Mansehra and Muzaffarabad, both in patients under 5. Though AWD is continuing to decline as a percent of all consultations, the rate varies considerably by reporting site and district. Battagram has the highest average rate by reporting site, at over 9 percent, but Poonch has the highest range of rates, with a maximum of 28 percent of all consultations for AWD in one of the reporting sites of that district. All districts had at least one reporting site with no consultations for AWD in week 46. See Figure 5.

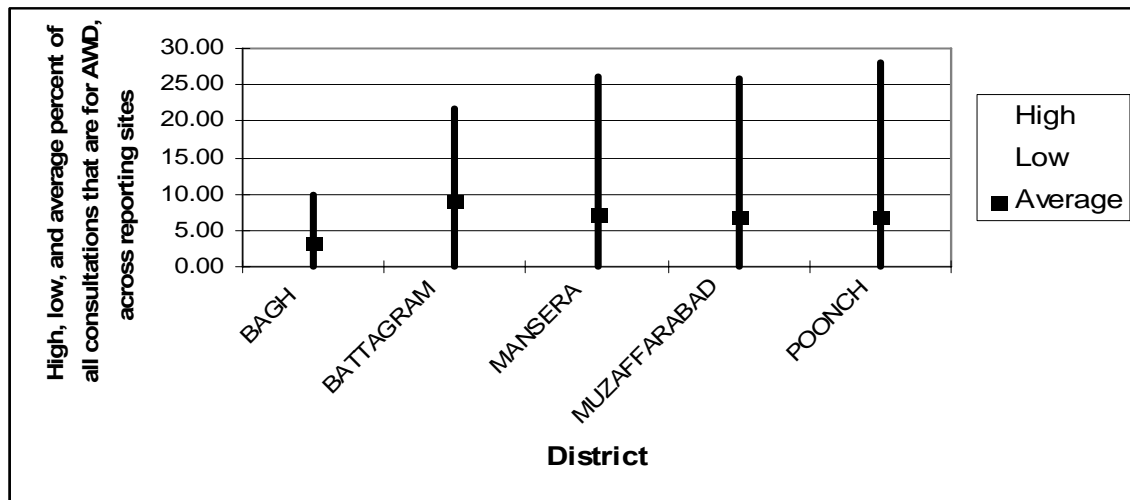


Figure 5: High, low, and average rate of AWD across reporting sites, by district, Earthquake Affected Areas, Pakistan, November 11 – November 17, 2006

**Bloody Diarrhoea**

In week 46, there were 298 cases of bloody diarrhoea reported, a 37% decrease over week 45. There were no associated deaths. The number of bloody diarrhoea cases, and the proportion of those cases that are in children under five, differ considerably by district. Muzaffarabad has the largest number of cases, at 156, and also one of the highest proportions of cases in children under 5, at 45% of all bloody diarrhoea cases. By contrast, there were only 13 cases of bloody diarrhoea reported from Poonch district in week 46, and only one of these cases was in a child under 5. See figure 6

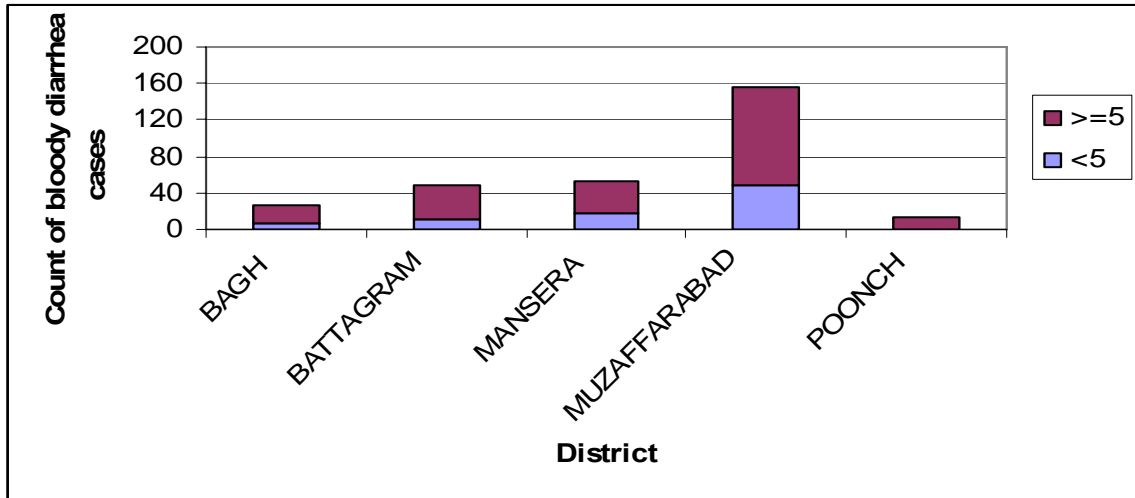


Figure 6: Bloody diarrhoea cases by district and age group, Earthquake Affected Areas, Pakistan, 11 November – 17 November, 2006

**Acute Jaundice Syndrome**

In week 46 there were 42 cases of suspected hepatitis, identical to the number reported in week 45. There were no associated deaths. The districts that had the most trouble with waterborne diarrhoea in the summer were those with the highest rate of suspected hepatitis (Battagram and Bagh), however, both of these districts have seen declines in the rate. There have been only two cases of suspected hepatitis reported from Poonch in the last four weeks. See figure 7.

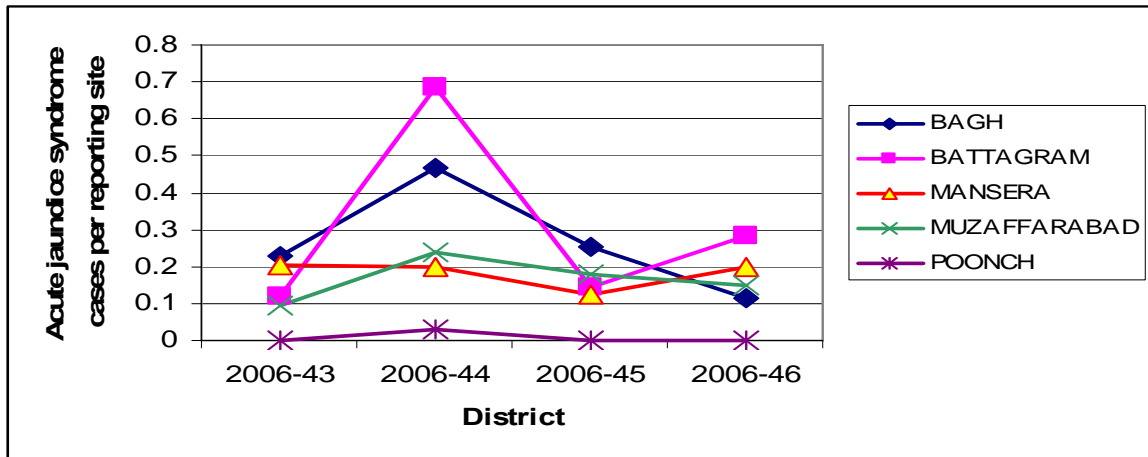


Figure 7: Trend in suspected hepatitis cases as cases per reporting site, by district, Earthquake Affected Areas, Pakistan, October 20 – November 17, 2006

**Malaria**

In week 46, there were 508 malaria cases reported, a 35% drop from week 45. There were no associated deaths. Malaria cases were very sparse in the time directly after the earthquake, and began to increase significantly in the early summer, with fluctuations, malaria cases per reporting site remained relatively steady, but now that the weather has cooled, and beginning to decline. See figure 8.

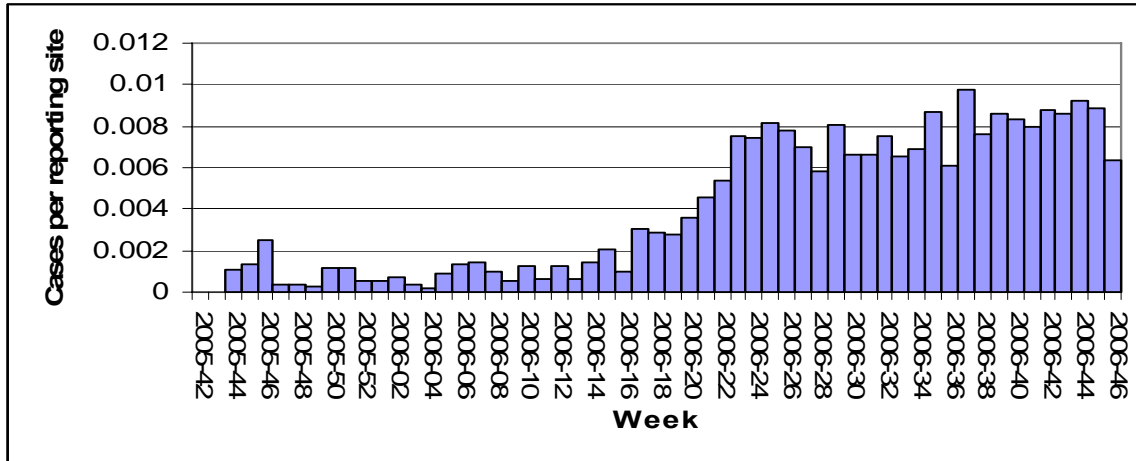


Figure 8: Trend in malaria cases per reporting site, Earthquake Affected Areas, Pakistan, October 15, 2005 – November 17, 2006

**Measles**

There were three cases of suspected measles reported in week 46, all in children under five, 2 in Battagram district and one in Poonch. The distribution of measles cases by district has changed between the emergency phase and the early recovery phase (October 2005 – end of March 2006 and April 2006 – November 2006, respectively). There has been an increase in the overall proportion of the measles cases that have been reported from Mansehra and Bagh, and a decrease from Battagram, which was also the only district to see a decrease in the overall number of cases. See figure 9.

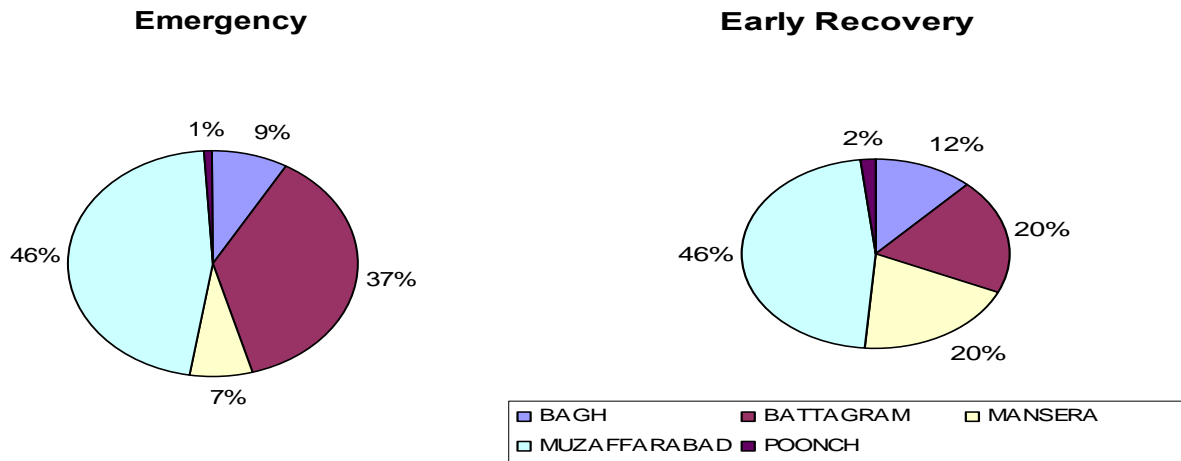


Figure 9: Proportion of measles cases by district, emergency and early recovery periods Earthquake Affected Areas, Pakistan, 15 October 2005 – 1 April 2006, 2 April - 17 November 2006.

**Acute Respiratory Infection**

In week 46, there were 19,291 consultations for ARI. There were three associated deaths, 2 in Mansehra, and 1 in Muzaffarabad, all in children under five years old. Though ARI is very common in every district, the outcome for patients with this condition differs by district. Mansehra has the highest case fatality rate for ARI, at approximately 3 in 10,000 cases resulting in death. Battagram has the lowest rate, at 1 in 100,000 cases resulting in death. See figure 10

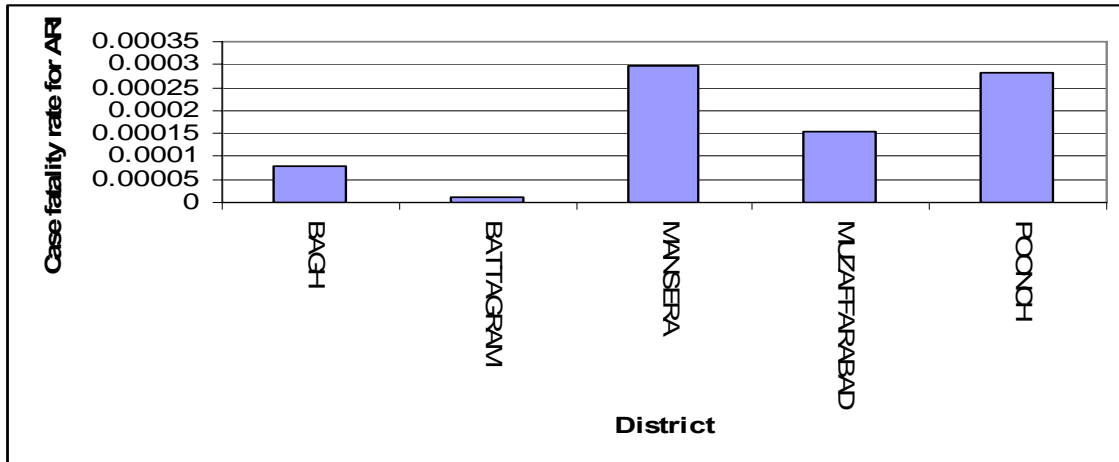


Figure 10: Case fatality rate for ARI, by district, Earthquake Affected Areas, Pakistan, October 15, 2005 - November 17, 2006

**Other Reportable Diseases and Conditions**

There were 7 cases of suspected meningitis in week 46, including one death, in a patient five years or older in Muzaffarabad. All 7 cases reported were from Muzaffarabad. There was one case of acute flaccid paralysis in Mansehra, in a patient under five years old. There were no cases of tetanus or hemorrhagic fever. There were 5,440 cases of fever of unknown origin, and 3,852 injuries.

The rate of fever of unknown origin varies by district, but has not fluctuated greatly within districts over the last 7 weeks. See figure 11.

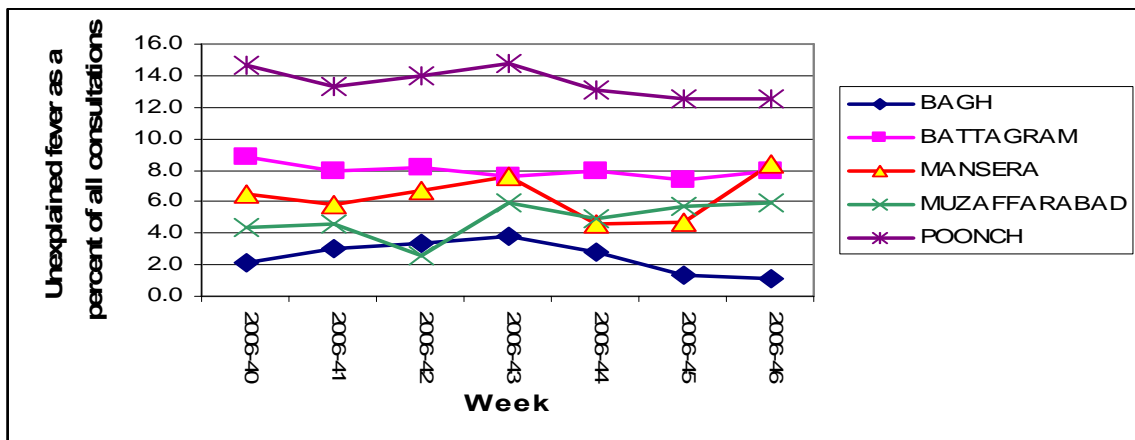


Figure 11: Trend in unexplained fever as a percent of all consultations, by district, Earthquake Affected Areas, Pakistan, 1 October – 17 November 2006.

## Outbreak Alert and Response<sup>1</sup>

### Special Report: Dengue Fever in Pakistan

The dengue fever outbreak throughout Pakistan is continuing, however, the number of newly reported cases is declining steadily. The peak in reported cases per day was on November 7<sup>th</sup>, though on the 19<sup>th</sup> there was a sudden rise again. Currently, there have been 1954 cases confirmed through laboratory testing.

The cases seen in Pakistan, as of the end of week 46, are given in Table 4

Table 4: Summary of Dengue Fever Cases Reported as of 19th November 2006

Province	Suspected Cases
Islamabad	437
Punjab	591
Sindh	3997
NWFP	21
AJK	117
Balochistan	4
Total	5164

### Measles:

#### Battagram

Two cases of measles was reported from DHQ Alpuri, district Shangla. The district health authorities were notified and a vaccination campaign has been carried out in the Union Council.

#### Rawalakot

One case of suspected measles, in a three year old child, was reported from BHU Hussain Kot. Due to incomplete address information, the patient could not be located.

### Acute Flaccid Paralysis:

#### Mansehra

One case of acute flaccid paralysis was reported from DHQ Hospital, Mansehra. The patient was a nine-month old girl from Ogra Kalian Mera, Mansehra. She had been fully vaccinated against polio. A stool sample was taken for analysis, but the child was subsequently diagnosed has Guillain-Barre Syndrome.

### Meningitis:

#### Muzaffarabad

8 cases of suspected meningitis, including one death, were reported from AIMS Hospital, Muzaffarabad. Physicians in the hospital determined clinically that 6 of the patients were not meningitis, but did not perform a lumbar puncture to confirm. Only one patient could be located for examination. This patient, who was admitted on November 10th, was reported in the alerts and outbreaks of week 45.

<sup>1</sup> Outbreak Investigation and response of Suspected Viral Hepatitis, Malaria, and Bloody Diarrhoea and Watery Diarrhoea would only take place when a cluster of cases is identified or there is an increase in the incidence of the disease.  
(Note: Single death due to Diarrhoea and single case of reported severe dehydration among >5 years would be investigated)

**Number of reported cases and deaths per District, AJK**Table 6. Number of reported cases and deaths, **Bagh District**, Earthquake Affected Areas, Pakistan, 11 - 17 Nov 2006.

Week	AWD		BD		AFP		MAL		ARI		MEA		MEN		JAU		TET		AHF		UXF		INJ		OTH	
	C	D	C	D	C	D	C	D	C	D	C	D	C	D	C	D	C	D	C	D	C	D	C	D	C	D
43	78	0	2	0	0	0	10	0	946	0	0	0	0	0	8	0	1	0	0	0	160	0	177	0	2802	0
44	535	0	35	0	0	0	65	0	3301	0	0	0	1	0	20	0	0	0	0	0	428	0	504	0	10565	0
45	314	0	44	0	0	0	41	0	1981	0	0	0	0	0	11	0	0	0	0	0	188	0	662	0	10257	0
46	416	0	27	0	0	0	21	0	2937	0	0	0	0	0	5	0	0	0	0	0	161	0	610	0	10846	3
<b>Total</b>	<b>1343</b>	<b>0</b>	<b>108</b>	<b>0</b>	<b>0</b>	<b>0</b>	<b>137</b>	<b>0</b>	<b>9165</b>	<b>0</b>	<b>0</b>	<b>0</b>	<b>1</b>	<b>0</b>	<b>44</b>	<b>0</b>	<b>1</b>	<b>0</b>	<b>0</b>	<b>0</b>	<b>937</b>	<b>0</b>	<b>1953</b>	<b>0</b>	<b>34470</b>	<b>3</b>

Table 7. Number of reported cases and deaths, **Poonch District**, Earthquake Affected Areas, Pakistan, 11 - 17 Nov 2006.

Week	AWD		BD		AFP		MAL		ARI		MEA		MEN		JAU		TET		AHF		UXF		INJ		OTH	
	C	D	C	D	C	D	C	D	C	D	C	D	C	D	C	D	C	D	C	D	C	D	C	D	C	D
43	591	0	8	0	0	0	119	0	1232	0	0	0	0	0	0	0	0	0	0	0	806	0	265	0	2434	5
44	1338	0	31	0	0	0	340	0	3716	1	0	0	0	0	2	0	0	0	0	0	2159	0	854	0	8105	1
45	1207	0	25	0	0	0	302	0	3343	1	0	0	0	0	0	0	0	0	0	0	1670	0	703	0	6052	5
46	1070	0	13	0	0	0	196	0	3396	0	1	0	0	0	0	0	0	0	0	0	1601	0	646	0	5854	4
<b>Total</b>	<b>4206</b>	<b>0</b>	<b>77</b>	<b>0</b>	<b>0</b>	<b>0</b>	<b>957</b>	<b>0</b>	<b>11687</b>	<b>2</b>	<b>1</b>	<b>0</b>	<b>0</b>	<b>0</b>	<b>2</b>	<b>0</b>	<b>0</b>	<b>0</b>	<b>0</b>	<b>0</b>	<b>6236</b>	<b>0</b>	<b>2468</b>	<b>0</b>	<b>22449</b>	<b>15</b>

Table 8. Number of reported cases and deaths, **Muzaffarabad District**, Earthquake Affected Areas, Pakistan, 11 - 17 Nov 2006.

Week	AWD		BD		AFP		MAL		ARI		MEA		MEN		JAU		TET		AHF		UXF		INJ		OTH	
	C	D	C	D	C	D	C	D	C	D	C	D	C	D	C	D	C	D	C	D	C	D	C	D	C	D
43	1484	1	190	0	0	0	111	0	2603	0	0	0	3	0	6	0	0	0	0	0	656	0	811	0	4046	6
44	2373	0	387	0	0	0	256	0	7425	1	0	0	6	0	19	0	0	0	0	0	1534	0	2164	0	16932	4
45	2292	0	270	0	0	0	243	0	7248	0	0	0	7	0	17	0	0	0	0	0	1687	0	2094	0	15328	4
46	1793	1	156	0	0	0	167	0	6868	1	0	0	7	1	12	0	0	0	0	0	1468	0	1859	0	12583	8
<b>Total</b>	<b>7942</b>	<b>2</b>	<b>1003</b>	<b>0</b>	<b>0</b>	<b>0</b>	<b>777</b>	<b>0</b>	<b>24144</b>	<b>2</b>	<b>0</b>	<b>0</b>	<b>23</b>	<b>1</b>	<b>54</b>	<b>0</b>	<b>0</b>	<b>0</b>	<b>0</b>	<b>0</b>	<b>5345</b>	<b>0</b>	<b>6928</b>	<b>0</b>	<b>48889</b>	<b>22</b>

**Number of reported cases and deaths per District, NWFP**Table 9. Number of reported cases and deaths, **Battagram District**, Earthquake Affected Areas, Pakistan, 11 - 17 Nov 2006.

Week	AWD		BD		AFP		MAL		ARI		MEA		MEN		JAU		TET		AHF		UXF		INJ		OTH	
	C	D	C	D	C	D	C	D	C	D	C	D	C	D	C	D	C	D	C	D	C	D	C	D	C	D
43	245	0	5	0	0	0	12	0	432	0	0	0	0	0	3	0	0	0	0	0	129	0	144	0	727	0
44	526	0	52	0	0	0	48	0	1150	0	2	0	0	0	24	0	0	0	0	0	482	0	284	0	3480	0
45	574	0	61	0	0	0	67	0	1704	0	1	0	0	0	6	0	0	0	0	0	514	0	304	0	3775	1
46	514	0	49	0	0	0	41	0	1681	0	2	0	0	0	12	0	0	0	0	0	479	0	251	0	2964	1
<b>Total</b>	<b>1859</b>	<b>0</b>	<b>167</b>	<b>0</b>	<b>0</b>	<b>0</b>	<b>168</b>	<b>0</b>	<b>4967</b>	<b>0</b>	<b>5</b>	<b>0</b>	<b>0</b>	<b>0</b>	<b>45</b>	<b>0</b>	<b>0</b>	<b>0</b>	<b>0</b>	<b>0</b>	<b>1604</b>	<b>0</b>	<b>983</b>	<b>0</b>	<b>10946</b>	<b>2</b>

Table 10. Number of reported cases and deaths, **Mansehra District\***, Earthquake Affected Areas, Pakistan, 11 - 17 Nov 2006.

Week	AWD		BD		AFP		MAL		ARI		MEA		MEN		JAU		TET		AHF		UXF		INJ		OTH	
	C	D	C	D	C	D	C	D	C	D	C	D	C	D	C	D	C	D	C	D	C	D	C	D	C	D
43	525	0	23	0	1	0	30	0	1298	1	0	0	0	0	13	0	1	0	0	0	500	0	357	0	3797	1
44	1417	0	64	0	0	0	88	0	5044	1	0	0	0	0	13	0	0	0	0	0	1097	1	611	0	15868	1
45	1070	1	71	0	2	0	123	0	4013	1	0	0	1	0	8	0	0	0	0	0	958	0	578	0	13585	0
46	1078	1	53	0	1	0	83	0	4409	2	0	0	0	0	13	0	0	0	0	0	1731	0	486	0	12871	4
<b>Total</b>	<b>4090</b>	<b>2</b>	<b>211</b>	<b>0</b>	<b>4</b>	<b>0</b>	<b>324</b>	<b>0</b>	<b>14764</b>	<b>5</b>	<b>0</b>	<b>0</b>	<b>1</b>	<b>0</b>	<b>47</b>	<b>0</b>	<b>1</b>	<b>0</b>	<b>0</b>	<b>0</b>	<b>4286</b>	<b>1</b>	<b>2032</b>	<b>0</b>	<b>46121</b>	<b>6</b>